

C5 & C6 UNDER DOOR LED KIT

Using this procedure you do not need to remove the door panels.

TIPS ON USING ADHESION PROMOTER. Cut very top off the packet, As you remove the sponge, squeeze the excess fluid back into the packet. Fold the top over and reseal the top to preserve the fluid for the other side or for other kits you may have purchased. Only a thin coat is needed so use sparingly.



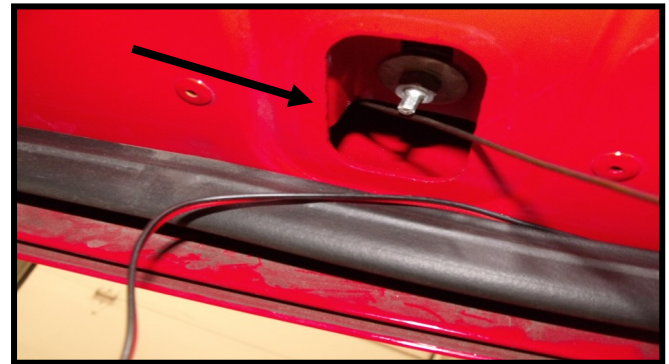
First decide where you want to mount the led strip, clean with alcohol pad. Apply adhesion promoter. Peel and stick the led strip. Route the wire over to and behind the outer weather strip.



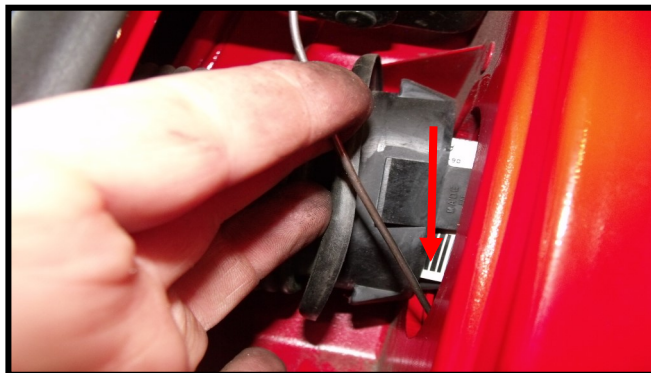
Using a forked tool you can pry the weather strip retainers out to tuck the wire behind. Route the wire forward toward the rectangular rubber plug located near the front of the door.



Remove the rubber plug.



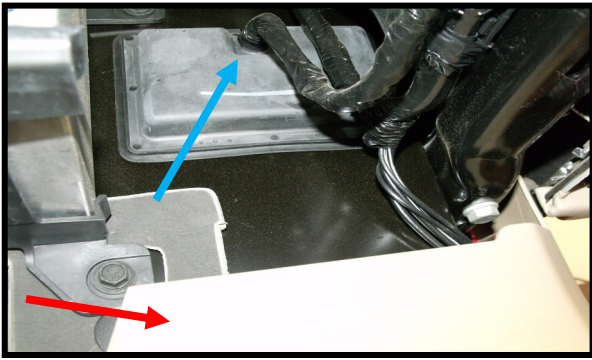
Straighten a wire hanger, feed it behind the bracket and toward the boot at the front of the door. Perform the next step before attempting to feed the wire forward.



Open the door and find this rubber plug between the front of the door and the car. Pull the plug loose from the door side so you can put your hand in there to feel for the hanger you are feeding from the bottom (red arrow). Once you have routed the wire hanger through the front of the door, tape the led wires to the wire hanger at the bottom of the door and pull it through the front of the door.



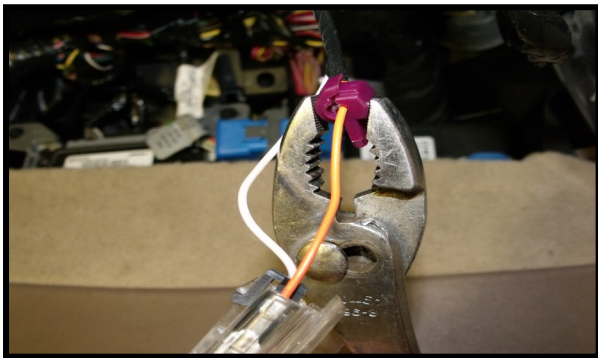
Next you will need to remove the panel above your feet on the passenger side. You can remove the factory light housing to make it easier to wire. You don't need to remove this panel on the drivers side because you can get to the next panel without removing it.



This shows the drivers side kick panel on the left side of the foot well. (red arrow). You will need to pull out the panel with the wire harness coming out (blue arrow) Just grab the wire harness and pull the panel out. It pops out easily. Do this on both sides.



Now route the led wires you pulled through the door into the door boot. Stick your hand through the hole where you removed the inside panel and feed the wires into the car. Pull the wires through to the foot well lights.



Locate the factory foot well light wires. They will be orange and white on a C6 and orange and black on a C5. Place 1 wire in each of the metal V of the supplied connectors and snap shut



Now plug in the led wires into the back of the connectors, C6 ,red to orange and black to white. On a C5, plug in the red led wire to the orange factory wire and the black to black. Be sure the interior lights have not timed out which they will do after about 15 minutes.



After the leds are working you can re-install all the panels you had to remove. NOTE: There is an opening at the top of the inside upper panel for the led wires to pass through without being pinched. Snap this panel in place.



Now you can re-install the bottom rubber boot over the wires. It will self seal but you can dab a little silicone around the wires if you wish. Be sure all wires are secured using tape if necessary. That's it! Enjoy the new look!