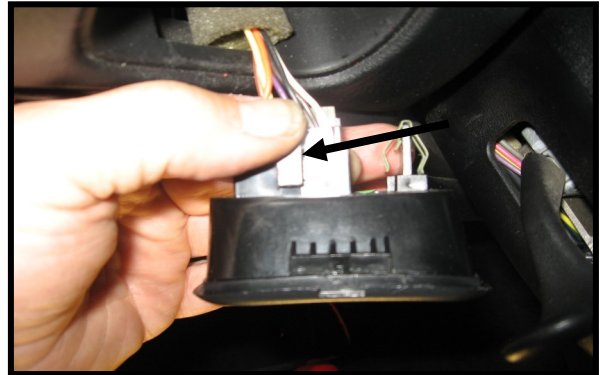


# C5 HATCH/FOG BUTTON - A/H PANEL LEDS



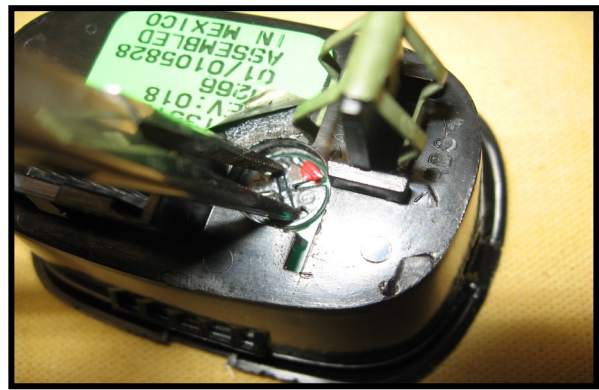
Locate the slot in the bottom of the hatch/fog housing. Using a small screwdriver pry the housing from the dash.



Depress the release tab and disconnect the wiring harness.



Red arrow shows the location of the bulb that needs to be changed. With a flat screwdriver, turn the bulb socket 1/4 turn counter clockwise and remove the bulb.



Insert the led by lining up the hooks on the leds with the slots on the back of the switch. Twist 1/4 turn clockwise to lock them in. If the leds are very tight you can first use a small file or dremmel to enlarge the hole very slightly. You can use a tight fitting screwdriver or a pair of hemo-stats and twist them in. Turn on the lights to test. If they don't light remove them and re-install them 180 degrees



Re-connect the wire harness and press the switch back into the dash.

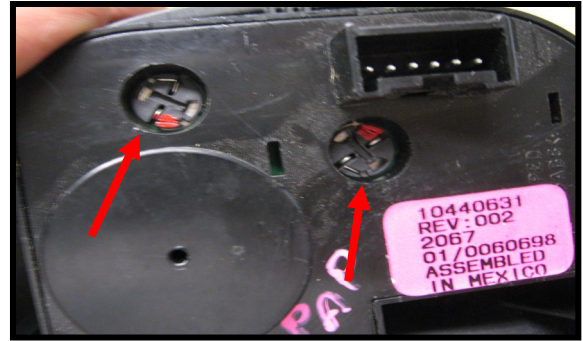


Active handling panel led instructions





Open center console. Using a small pry tool pry the A/H Panel up and out of the console. Disconnect the wiring harness.



Red arrows show the location of the 2 bulbs. Using a good fitting flat screwdriver, turn the bulb counterclockwise 1/4 turn and remove.



Using the same procedure as on the hatch switch, install the leds and twist them into place. Turn on the lights and plug the panel in to test. If they don't light remove the led, turn it 180 degrees re-install.



Connect all wiring and snap panel back into place.

Please note that some text on these panels is actually printed on so may not light up. This differs from year to year and application.

