

# C5 COVE LEDS

FLOOR JACK & JACK STANDS  
WHEEL REMOVAL TOOLS  
7MM, 10MM, 13MM SOCKETS & EXTENSIONS  
BLACK ELECTRICAL TAPE

## TOOLS NEEDED

TELESCOPING MAGNET IS HELPFUL  
COAT HANGAR IS HELPFUL  
WIRE TIES

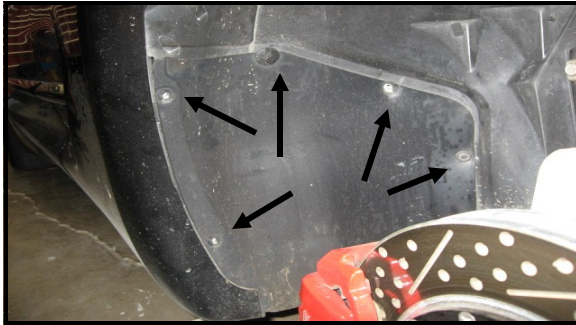
IF YOU PLAN TO PAINT THE COVE SHIELDS, SELECT COLOR

## HELPFUL TIPS

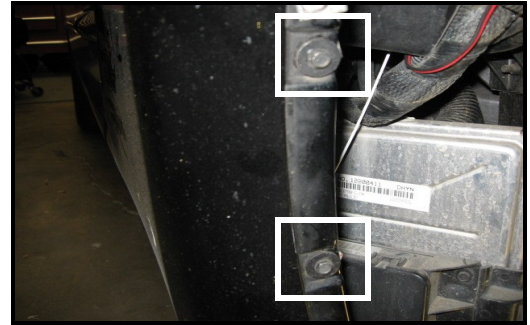
Painting the cove shield gives the leds something to reflect off of. Really makes the color “POP”.

Installation can be done without removing wheels by turning the front wheels to gain access but it is more difficult.

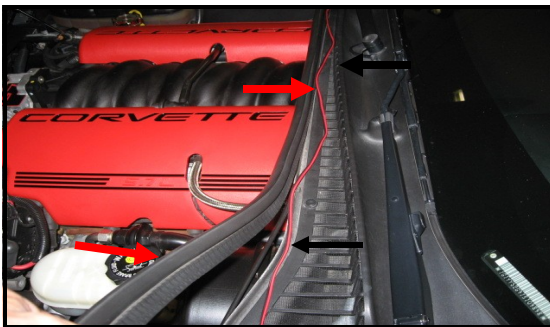
Begin by slightly loosening lug nuts while car is on the ground, raise vehicle, support with jack stands, remove front wheels.



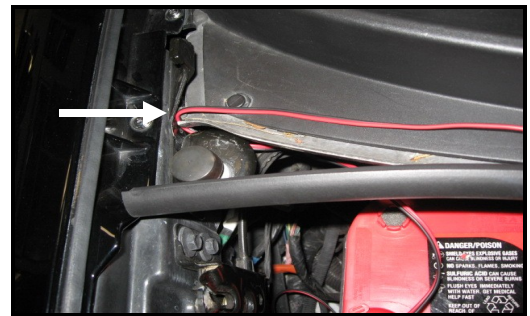
Remove these 5 screws and tie panel back with bunge cord. This will give you access to the 2 cove shield screws.



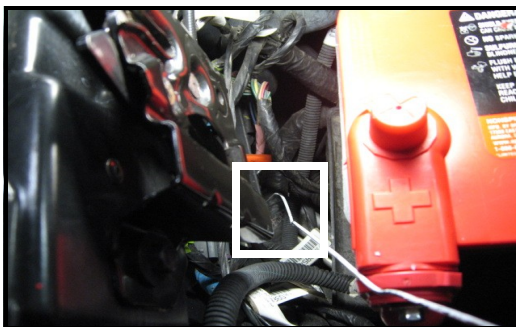
Remove these two 7mm screws and remove the cove shield. Now is a good time to paint them so they will be dry when re-installing. Painting the shields amplifies the effects of the leds.



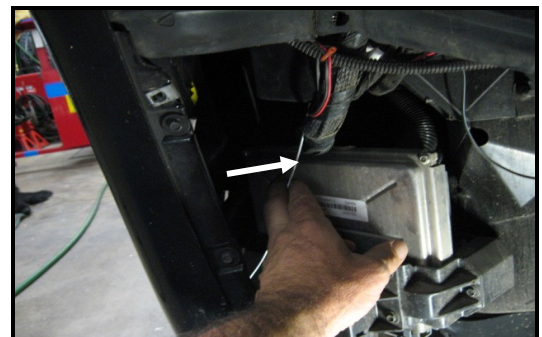
Lay out the harness with the controll box by the battery and string out the long wire across the cowl over to the drivers side. (black arrows)  
Remove the cowl weather strip. (red arrows).



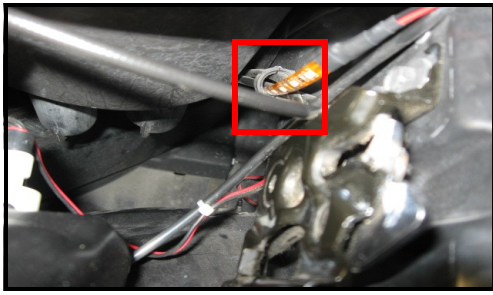
Pass the wire behind the rubber hood stop on the passenger side and so you can route the wires by the battery.



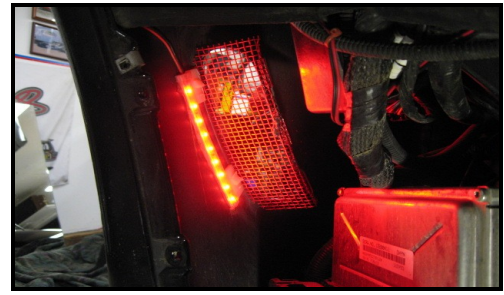
This is where a coat hanger comes in handy. Use the hanger to find a path for the led strip to get into the cove area.



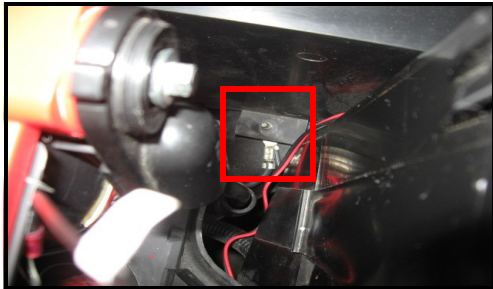
white arrow shows about where the white hanger may come through. Tape the led strip to the other end of the coat hanger and gently pull it through.



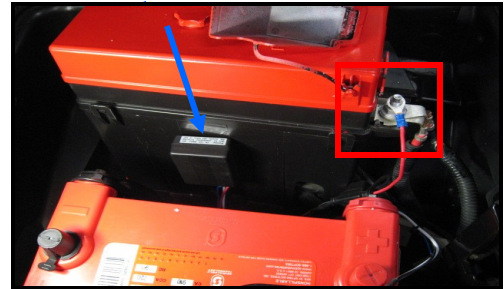
Thread the drivers side led strip through the hood cable loop behind the hood latch. This will drop the leds into the cove area.



Wipe the mounting area with the provided alcohol pads. Peel and stick the strips near the cove opening pointing toward the inside of the car. You can also experiment with mounting the strips on the cove shield if you want them to shine out of the opening more.



This shows where the black wire from the control box attaches. It is below the negative battery terminal. This is where a magnet comes in handy. Place a supplied small washer over the stud, black wire, another small washer then the small nut. Tighten. 2 are provided in case you drop one.



Remove the cover over the battery terminal on the under hood fuse box. ( red box). Attach red wire from controll box using the supplied large washer and nut. Tighten. Blue arrow shows where the control box can be mounted once all wiring is secured.



You can now test the cove lights. Make sure they are working before re-assembling. Secure the wire across the cowl with black electrical tape before re-installing the weather strip. Make sure not to pinch the wires. Attach control box if you havent already done so.



This shows the wire secured under the cowl strip. Always test the lights after the wiring is completed.

Install both cove shields and re-assemble everything you took apart. Be sure to torque the front wheels to 100 ft lbs. when finished. The control box has a 5 amp fuse for protection. Enjoy your new cove lights and get noticed!! Be cautious when using the strobe function on the street. You may get unwanted attention!!