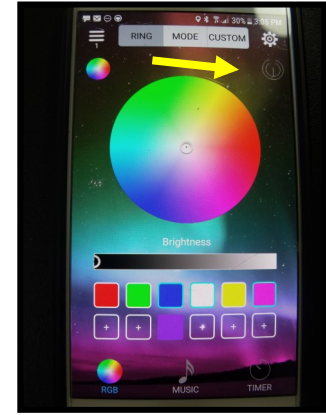
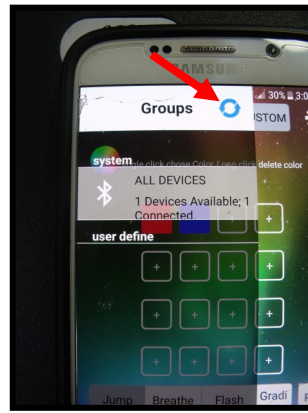
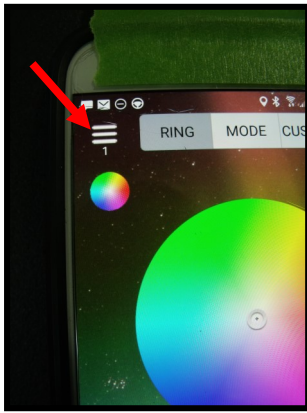
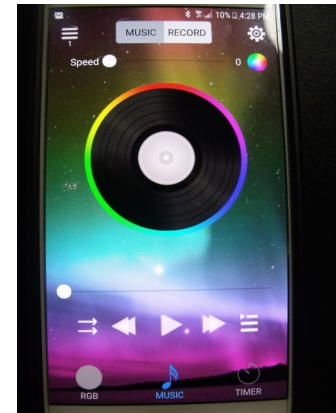
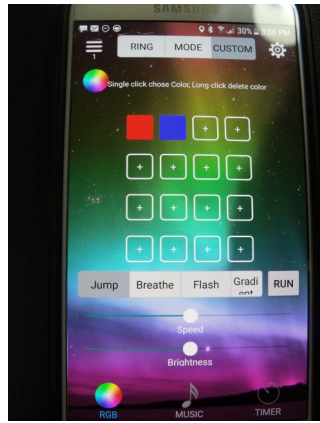
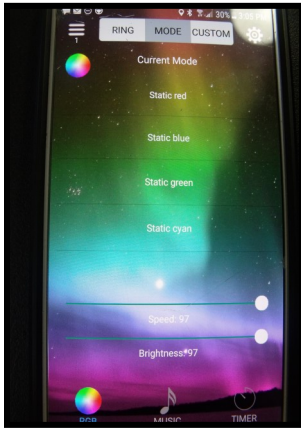


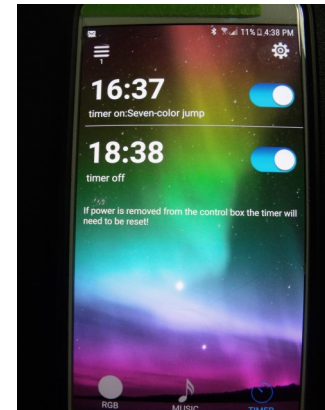
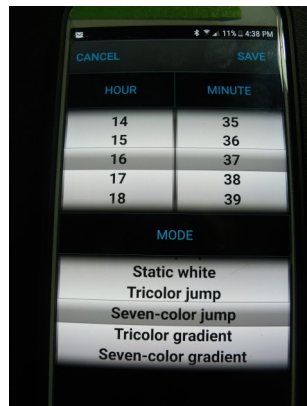
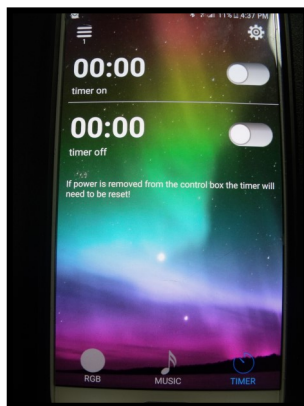
INSTRUCTIONS FOR LED BLE APP



Make sure your Bluetooth is on. Open the LED BLE APP. Device will scan and a #1 should appear under the menu bars. (red arrow). Give it some time but if # 1 doesn't appear tap on the 3 bars then tap the blue refresh button next to the GROUPS word. You should see whats in the second picture. 1 device available, 1 connected. Notice the 3 menu buttons across the top of the app. RING, MODE, CUSTOM. **On Android and some I phones you must be in the RING mode to see the power button (yellow arrow). Red is OFF white is ON.**



From the **RING** screen you can use the color wheel to change the colors or direct pick the colors from the menu. Tap the + button then touch the color wheel to select color then hit confirm. There is also a BRIGHTNESS slider to adjust brightness. **MODE** button: Tap on any color or function to select. Scroll the menu up or down to find all the options. There is also a speed and brightness slider. Second picture below shows the **CUSTOM** screen. Here you can build you own custom color menu. You can then select the function you want to run those colors with. You can pick JUMP, BREATHE, FLASH, GRADIENT. You **MUST** tap the RUN button to activate the function you select. There is also a speed and brightness slider. There are 3 optional buttons on the bottom of the screen to select RGB, MUSIC or TIMER. From the Music button you can have the lights beat to music on your phone or from an external sound.



SPECIAL NOTE; YOU MUST ALWAYS TURN THE SYSTEM OFF BEFORE SETTING THE TIMER

Tap the **timer on** numbers, The second screen will pop up so you can scroll through the ON times. Also select the mode you wish the system to display when on. Hit SAVE then slide the button to the ON position. Repeat for the off time. Tap the RGB button at the bottom to return to the main screen. You can then turn the APP off and walk away. It will turn the system on and off at the times you set without being near the car. If the timer function isn't on the bottom of the screen, tap the gear icon, upper right corner then look for the timer.