

Storage Console Installation Instructions

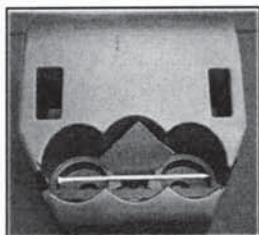
PATENT PENDING

Read the entire instructions before proceeding.

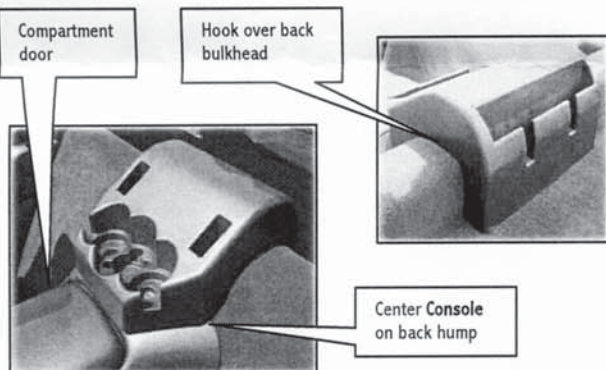
The Storage Console must be installed correctly before use.

Parts Included with the Storage Console:

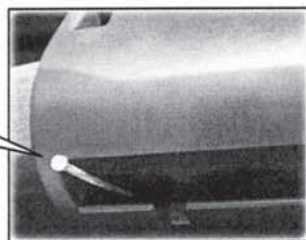
- Storage Console — C5 : P/N 4000001 *or* Storage Console — C6: P/N 4000001.001
- Fastening Panel : P/N 4000004
- Vibration Pad Set: P/N 4000003
- Hole Punch: P/N 4000005
- Instructions: 8000006



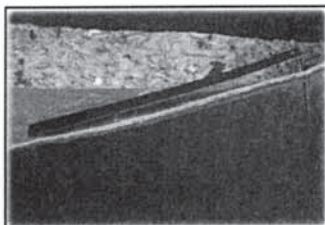
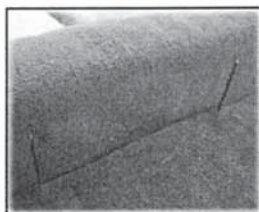
Test fit the **Storage Console (Console)** in car as shown. Position the **Console** making sure it is centered on the back hump and the compartment door will open. While holding the back of the **Console** down in position, push the **Hole Punch** through the holes in the bottom of the back map pocket into carpet below. The holes must be pressed through the carpet rubber backing.



Push **Hole Punch** through the two holes in bottom of map pocket into the carpet



Remove the **Console**. Lift the back cargo area carpet and push the pointed tabs of the **Fastening Panel** through the punched holes as shown.



Remove the backing from the adhesive pads on the bottom of the **Console**. The adhesive pads will contact the car's back hump.

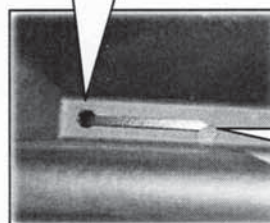
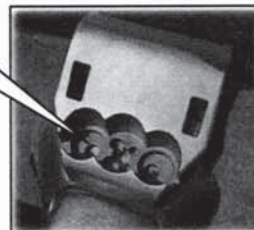


Carefully place the **Console** into position. Be sure the **Console** is centered on the back hump and the pointed tabs of the **Fastening Panel** come through the holes in back map pocket of the **Console**. Press down firmly on the cup holder openings and hold for 30 seconds to set adhesive pads. Press down on the backside of the **Console** and reach into the map pocket to bend down the **Fastening Panel** tabs.

The Console must be mounted securely before use.

Holes in bottom of the map pocket align with pointed ends of **Fastening Panel**.

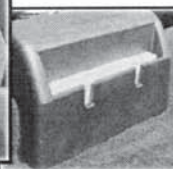
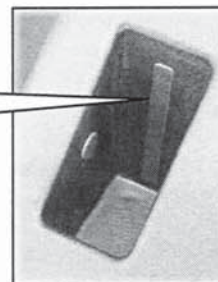
Press down firmly in bottom of three circles



Press down firmly on the back of **Console** and bend down ends of **Fastening Panel** as shown.

Install padding strips from the **Vibration Pad Set** by removing backing and adhering into openings to prevent rattles as needed

Install padding strips in openings as needed to provide items snug fit and to prevent rattles



Use the **Console** to store mugs, beverage containers, sunglasses, cell phones, and even coins. Accessorize your **Console** with emblems and decals to further beautify your Corvette! Enjoy!