

AMERICAN CAR CRAFT

C6 Polished Aluminum Billet Grille

INSTALLATION INSTRUCTIONS

- 1. Place 2" or 3" masking tape on the factory grille opening just in front of the factory grille to protect it during installation. SEE FIGURE A.**
- 2. Holding your new grille in position mark the tape at the four cross bar locations. SEE FIGURE B.**
- 3. Insert the four zip ties (provided) around the center cross bar of the factory grille and leave in position. SEE FIGURE C and D.**
- 4. Using the help of a friend to hold the grille, slide each zip tie through the center slot and around the cross brace at all four locations. SEE FIGURE E and F.**
- 5. Once all 4 zip ties have been routed and connected. Push grille into position and firmly pull zip ties to tightly attach your new grille to the factory grille. SEE FIGURE G.**
- 6. Once grille is tight in position, cut the excess tie off with a small exacto knife. Use a small screwdriver to push the head of the zip tie towards the back of the grille so they won't be noticeable. SEE FIGURE H.**

(OPTIONAL AFTER GRILLE IS IN PLACE) You have been provided with two black spacers that you may elect to use. By adding these spacers you will center the grille in the factory grille opening and may create a better appearance. To use these spacers simply peel the attachment tape off and place the spacers with the sticky side to the bumper (sticky side facing up) on top of the new grille just above the two center cross braces. Do this by gently pulling the grille in a downward direction and placing the spacer in the opening. SEE FIGURES I, J and K.

Thank You and Enjoy Your New Purchase.



FIGURE A



FIGURE B



FIGURE C



FIGURE D



FIGURE E



FIGURE F

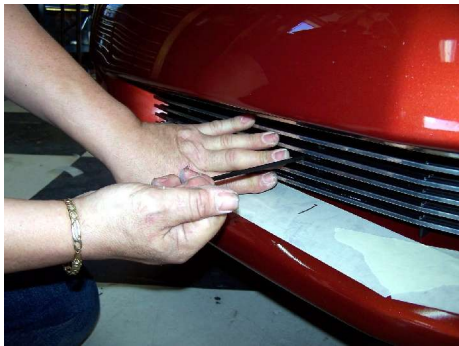


FIGURE G



FIGURE H



FIGURE I



FIGURE J



FIGURE K



INSTALLATION COMPLETE