

***advanced FLOW engineering*** Silver Bullet Throttle Body Spacer  
**Instruction Manual** P/N: 46-34017B (Fits with Factory Air Intake)

Make: CHEVROLET

Model: CORVETTE (C8)

Year: 2020-2021

Engine: V8-6.2L



- Please read the entire instruction manual before proceeding.
- Ensure all components listed are present.
- If you are missing any of the components, call customer support at 951-493-7185.
- Ensure you have all necessary tools before proceeding.
- Do not attempt to work on your vehicle when the engine is hot.
- Retain factory parts for future use.

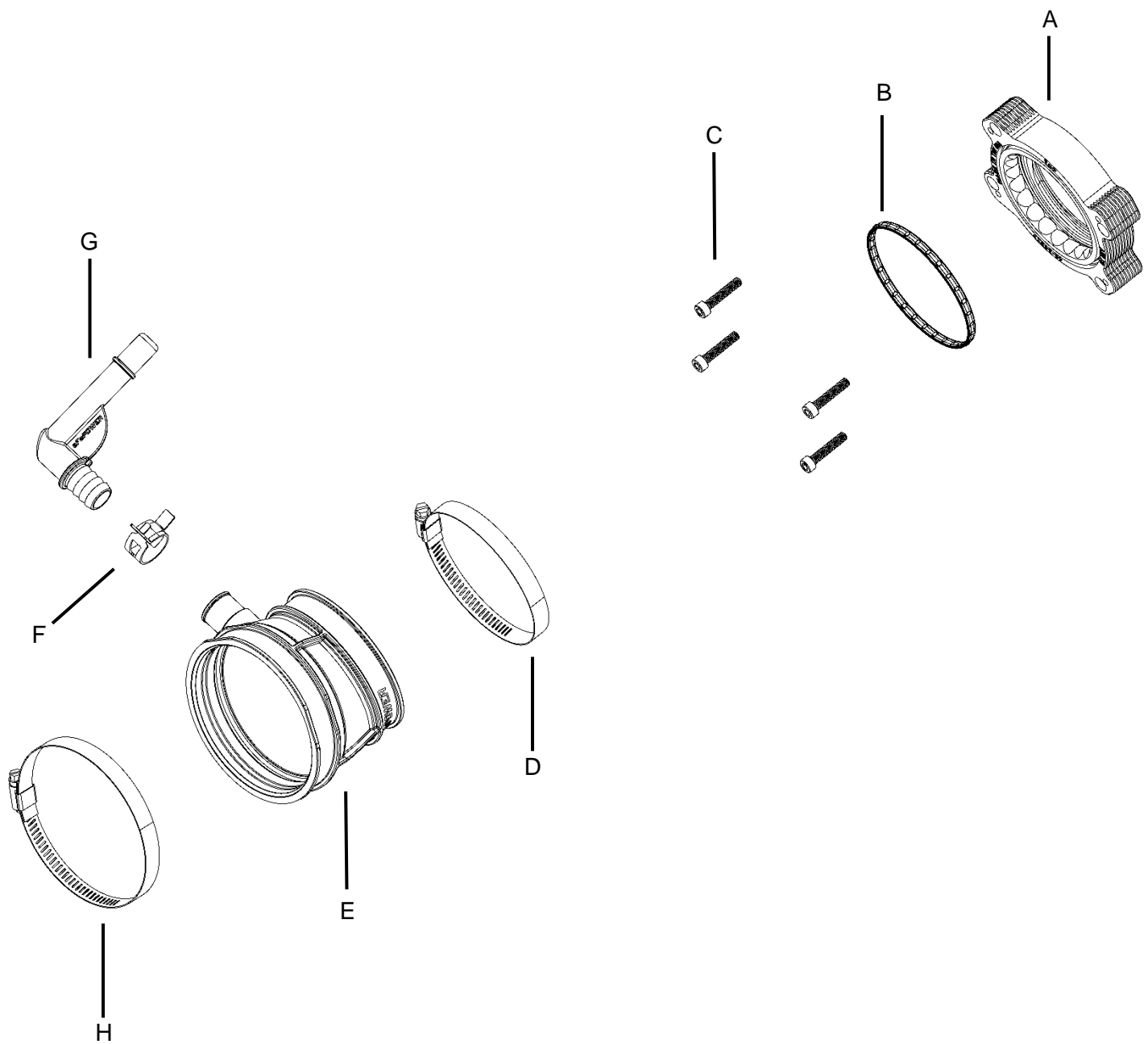
Label	Qty.	Description	Part Number
A	1	Silver Bullet Throttle Body Spacer (Black)	R46-34017B
B	1	O-ring	03-50663
C	4	Screw, Socket Head Cap: M6 x 1.0 x 30	03-50382
D	1	Clamp, 064 (2-1/2" - 4-1/2 ")	03-50006
E	1	Coupling, Silicone	05-01571
F	1	Clamp, Spring Band	03-50646
G	1	Fitting, 5/8" QD, 90 Deg	05-01576
H	1	Clamp, 072 (3" – 5")	03-50010

**Installation will require the following tools:**

7mm, 8mm, 10mm Nut Drivers or Ratchet and Sockets, T15 Driver, Flat Head Screwdriver, 5mm Hex Key, Pliers

Warranty Information available at <https://afepower.com/contact#warranty>

**Emissions Disclaimer:** This product is not currently CARB exempt and is not available for purchase in California or for use on any vehicle registered with the California Department of Motor Vehicles.





**Figure A**

## **Refer to Figure A for Step 1**

Step 1: Open the trunk and remove the seal trim surrounding the trunk.



REMOVAL



Figure B

## **Refer to Figure B for Step 2**

Step 2: Remove the (8) T15 screws securing the roof latches on driver side and passenger side.





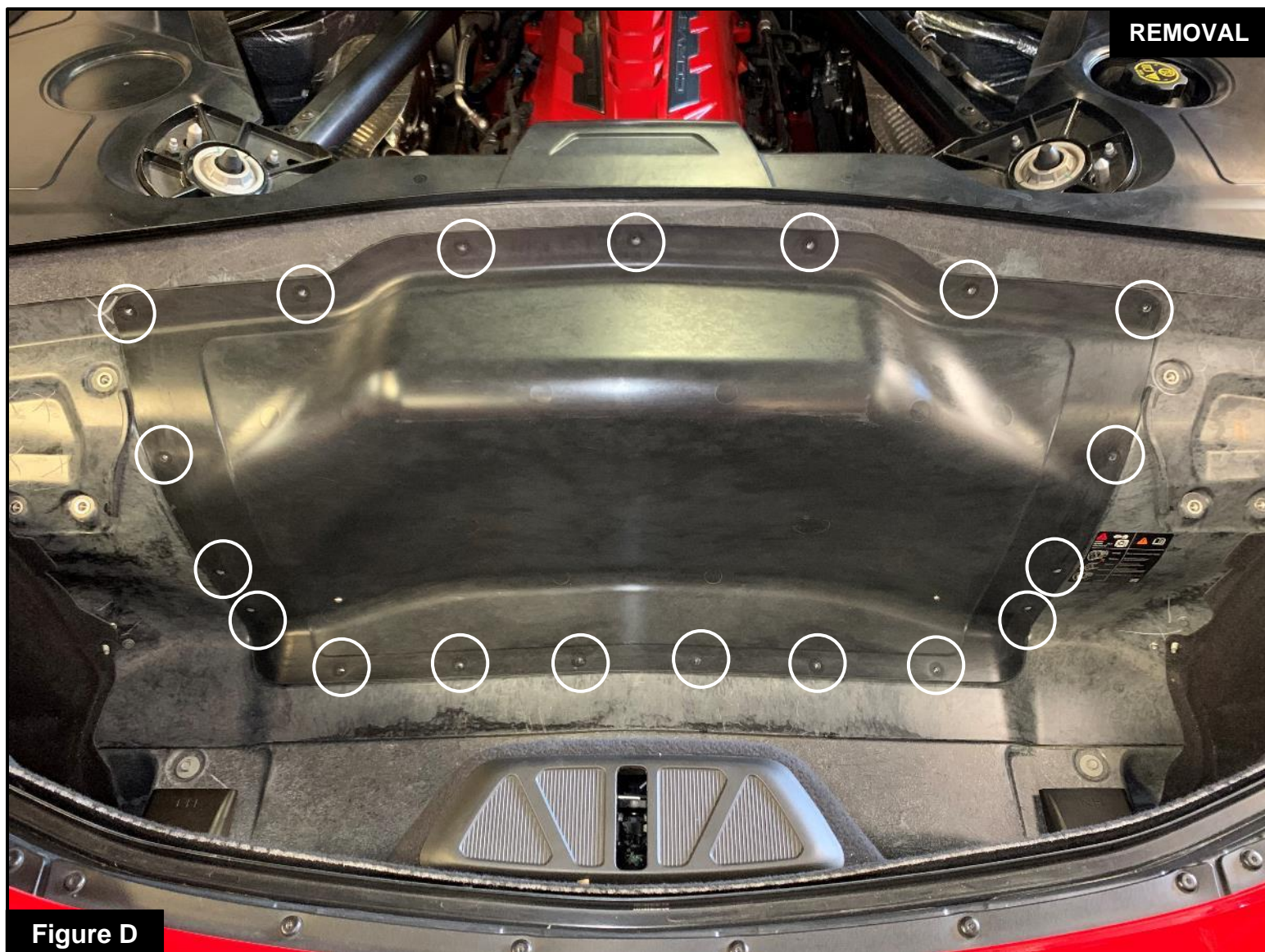
### **Refer to Figure C for Steps 3-5**

Step 3: . Unscrew and remove the (2) cargo net hooks (one on the driver side and one on the passenger side)

Step 4: Remove the (4) push clips securing the carpet (2 on the driver side and 2 on the passenger side).

Step 5: Remove the carpet to gain access to the engine





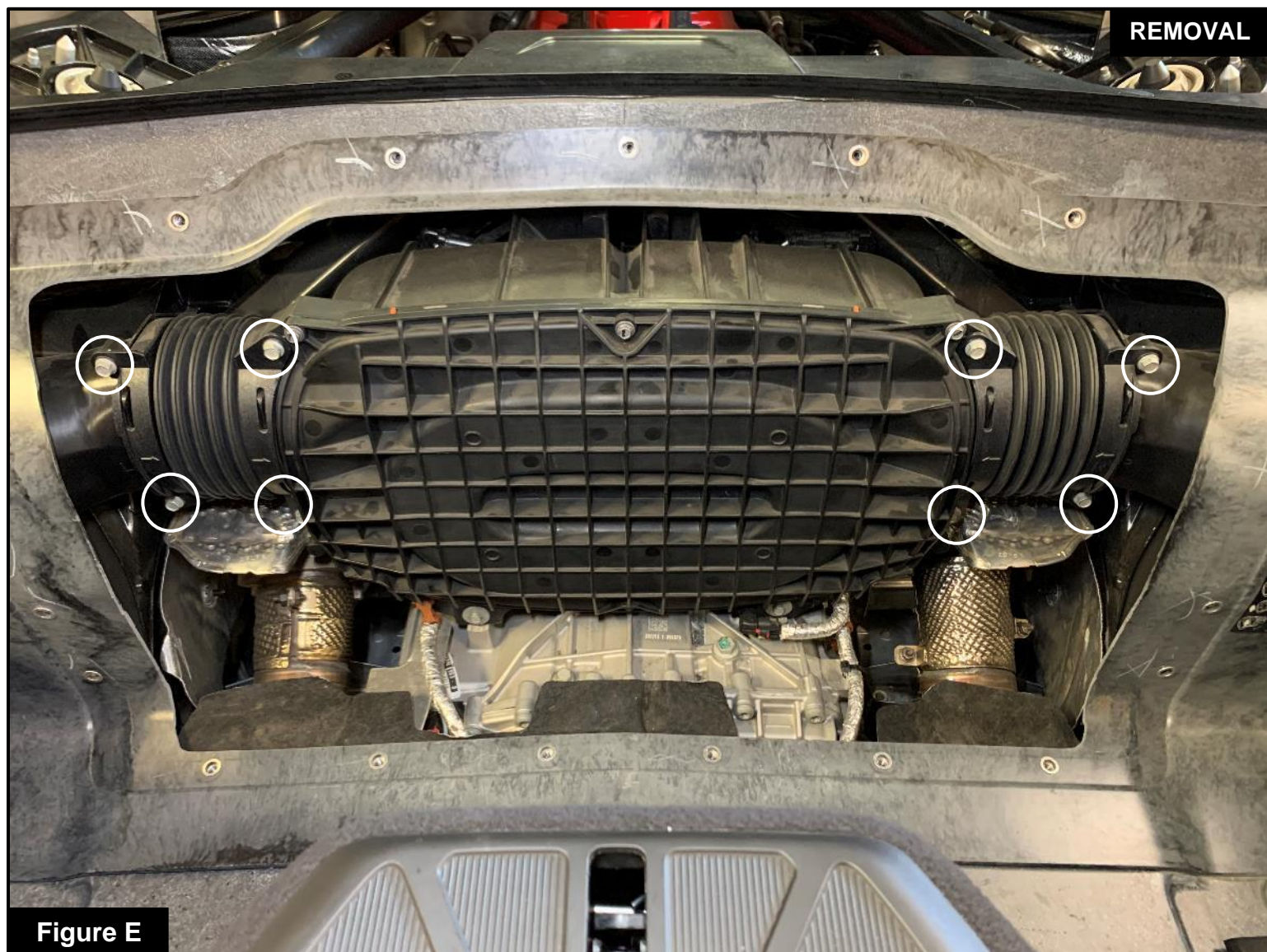
**Figure D**

### **Refer to Figure D for Steps 6-7**

Step 6: Remove the T15 screws securing the plastic engine cover.

Step 7: Then remove the plastic engine cover to gain access to the factory air box.





**Figure E**

### **Refer to Figure E for Step 8**

Step 8: Remove the (8) 10mm screws securing the left and right air inlet duct couplings and remove them from the air box.





**Figure F**

### **Refer to Figure F for Step 9**

Step 9: Locate the temperature sensor harness on the passenger side of the factory air box and disconnect the harness, by sliding back the red locking tab and then pressing down on the back tab.



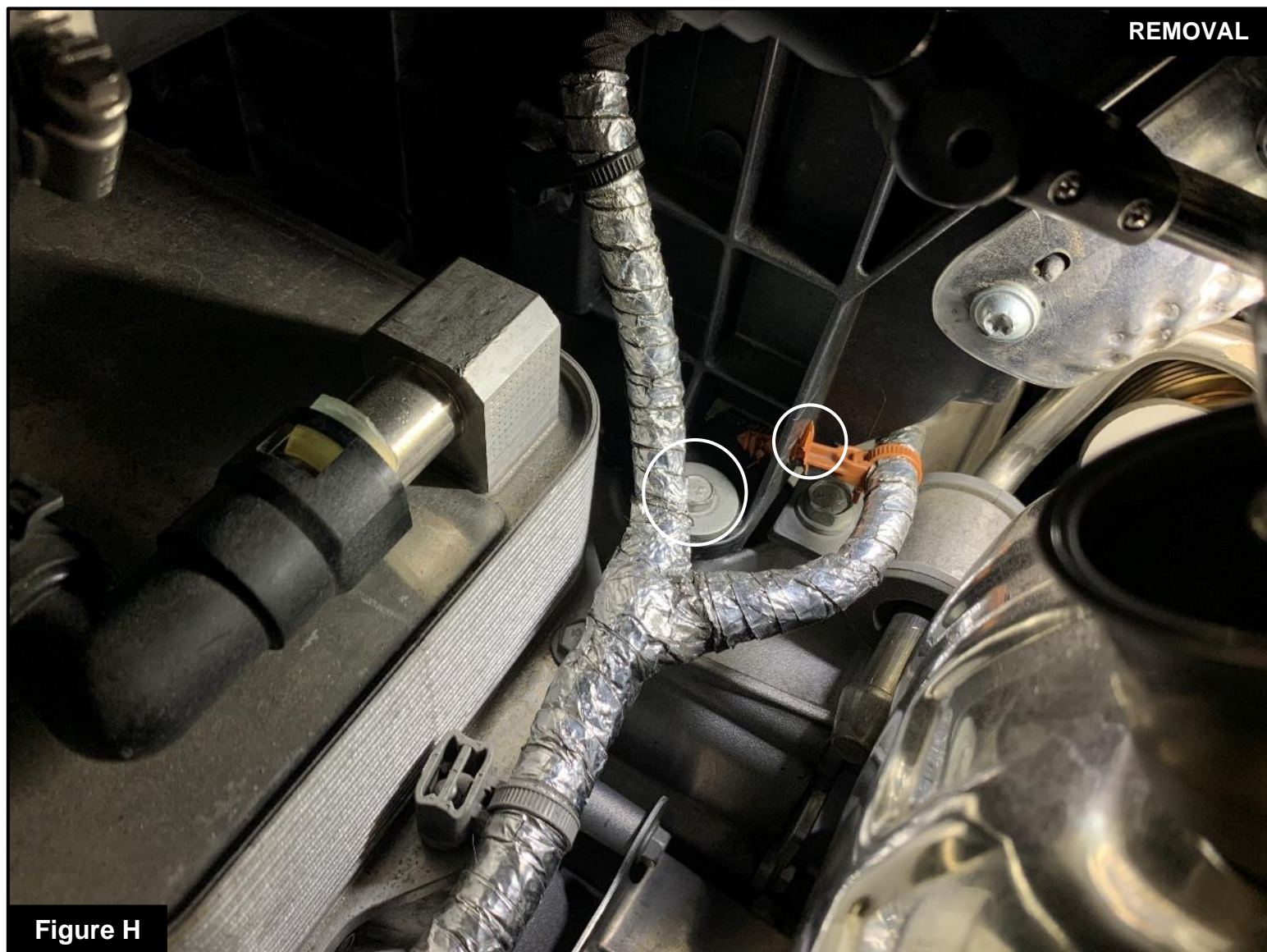
**Figure G**

### **Refer to Figure G for Steps 10-11**

Step 10: Remove the (2) 10mm screws securing the factory air box to the transmission.

Step 11: Unclip the harnesses on both side of the air box.





### **Refer to Figure H for Steps 12-13**

Step 12: From the engine side, remove the 10mm screw securing the factory air box on the driver side.

Step 13: Unclip the harness from the side of the air box.



**Figure I**

### **Refer to Figure I for Steps 14-15**

Step 14: Remove the 10mm screw securing the air box on the passenger side.

Step 15: Unclip the harness from the side of the air box.



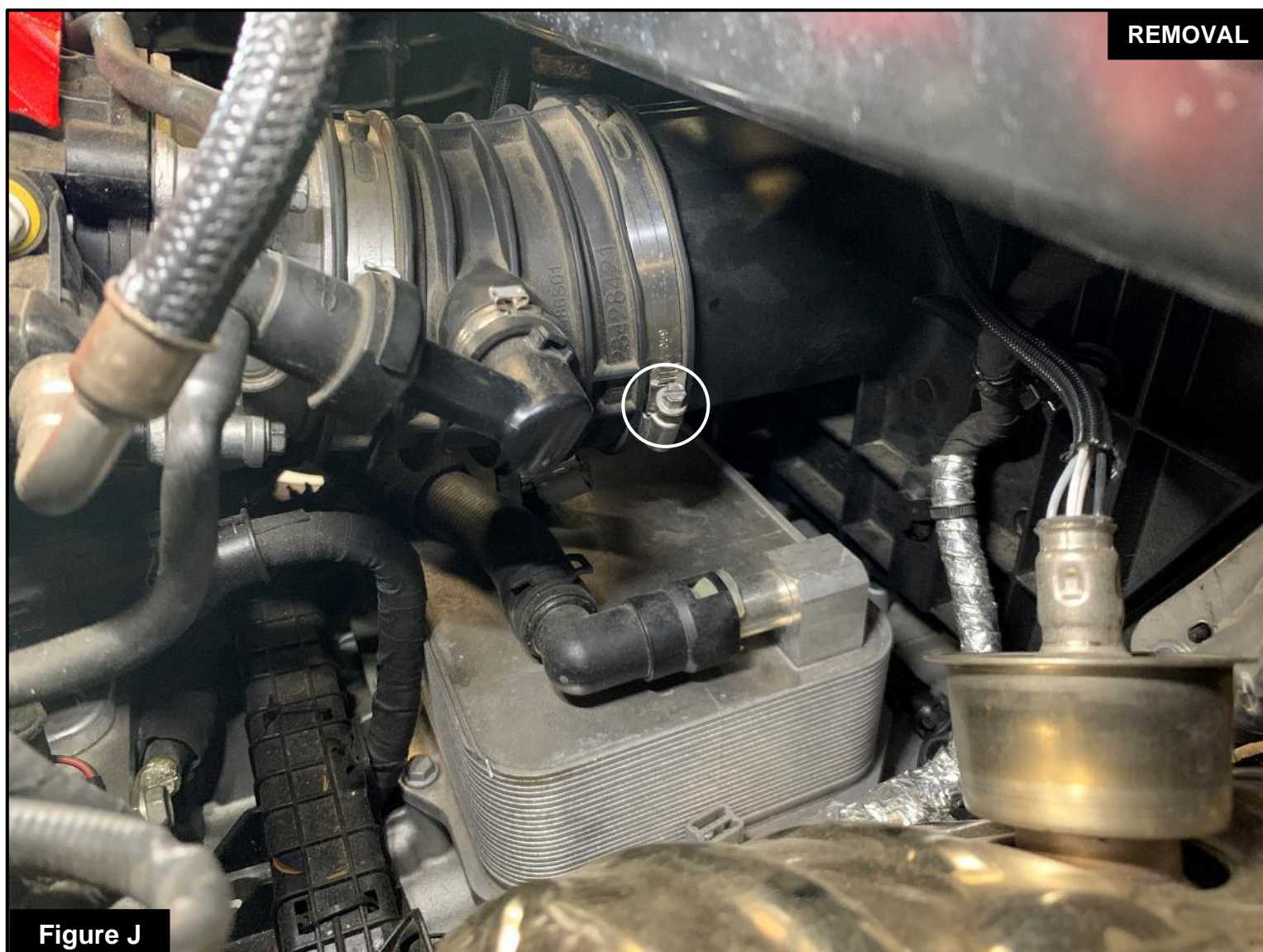


Figure J

### **Refer to Figure J for Step 16**

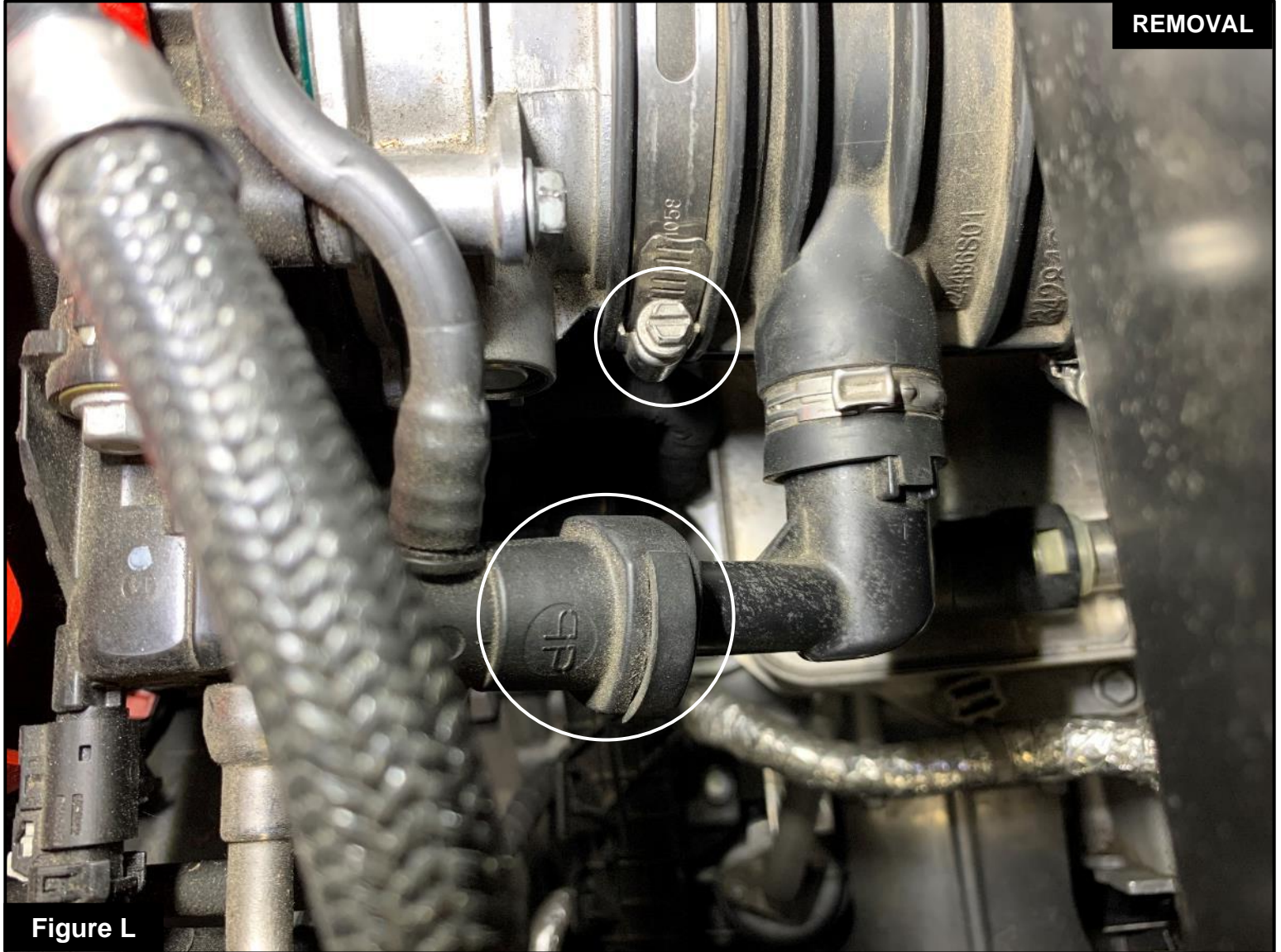
Step 16: Using a 7mm nut driver or flathead screwdriver, loosen the clamp securing the coupling to the factory air box. Do not loosen the clamp securing the coupling to the throttle body yet.



### **Refer to Figure K for Step 17**

Step 17: Pull the factory air box out of the coupling and move it towards the rear of the vehicle. Be careful not to damage any of the remaining wires connected to the airbox. It only needs to come back 1-2 inches to allow removal of the throttle body coupling.



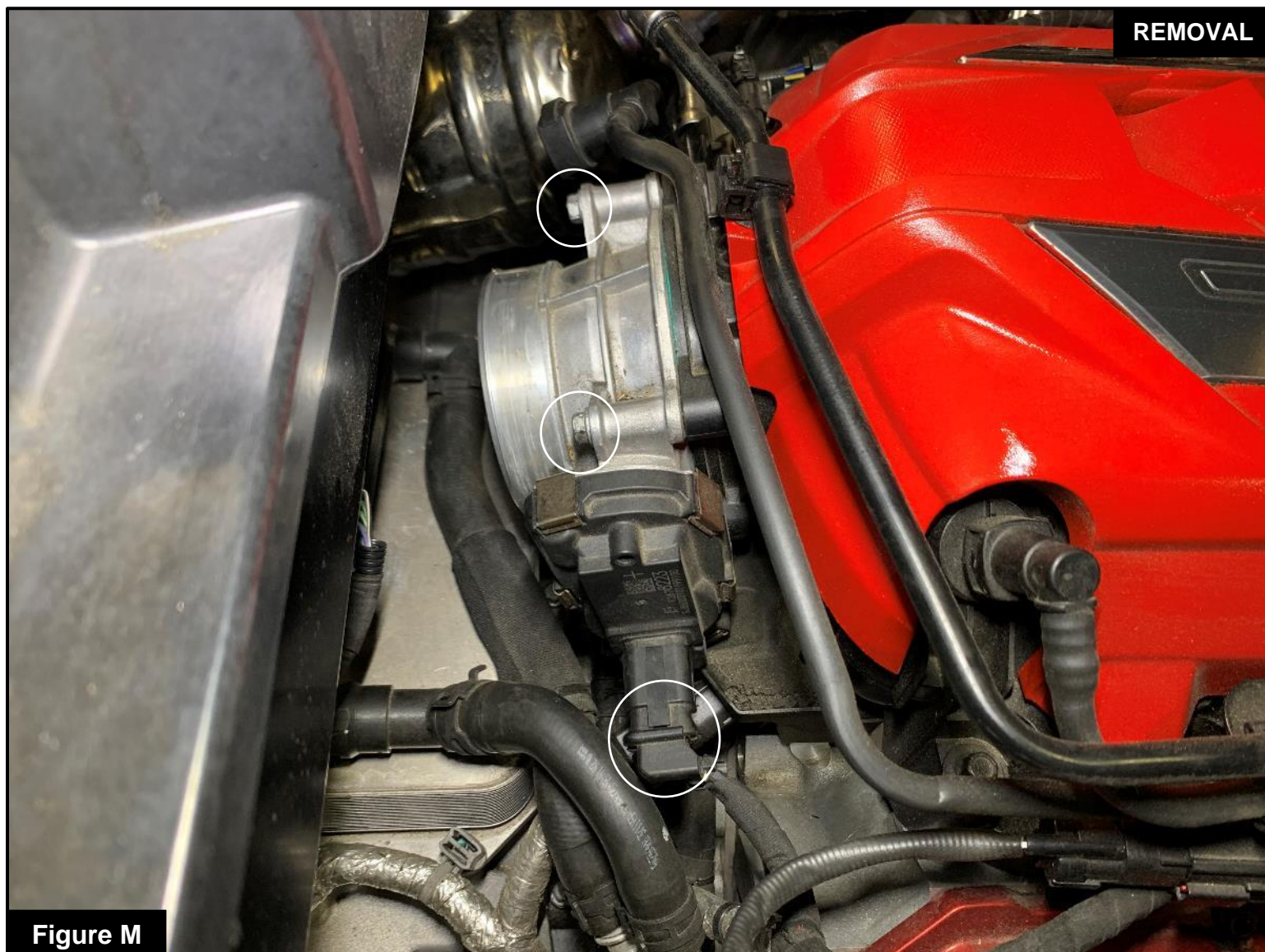


**Figure L**

**Refer to Figure L for Steps 18-19**

Step 18: Disconnect the quick disconnect fitting from the throttle body coupling, by pushing down on the black tab and pulling them apart.

Step 19: Using a 7mm nut driver or flathead screwdriver, loosen the clamp securing the coupling to the throttle body. Then remove the coupling from the vehicle.



**Figure M**

### **Refer to Figure M for Steps 20-21**

Step 20: Disconnect the harness from the throttle body, by squeezing the locking tab on the bottom side of the connector and pulling it out.

Step 21: Remove the (4) 10mm screws securing the throttle body to the intake manifold, and then remove the throttle body from the vehicle. These factory screws will be reused.

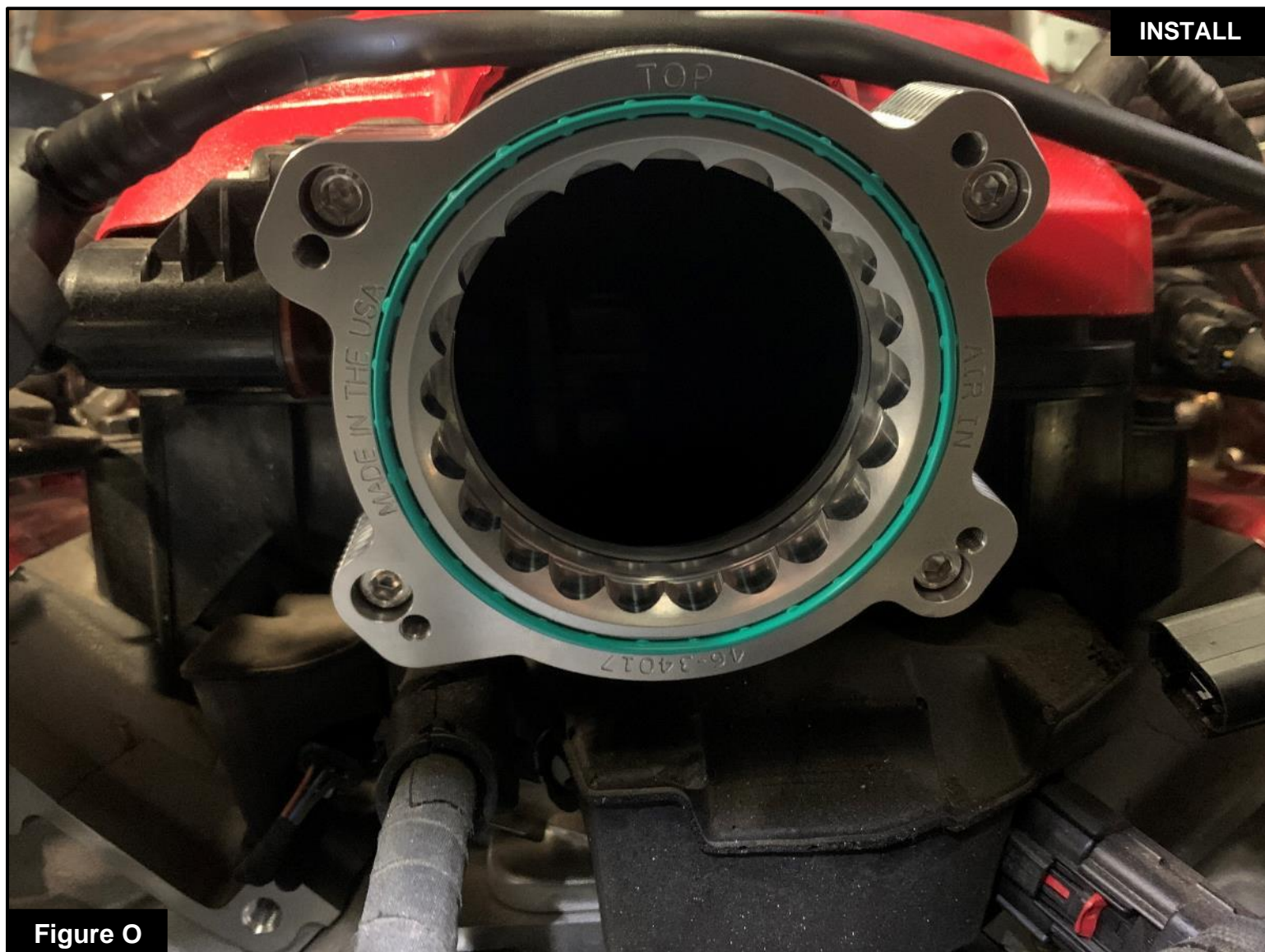




Figure N

## Refer to Figure N for Step 22

Step 22: Install the provided O-ring onto the throttle body spacer groove. Make sure it is fully seated.



**Figure O**

### **Refer to Figure O for Step 23**

Step 23: Install the throttle body spacer onto the intake manifold using the provided bolts. The face with no engraving will go against the intake manifold and the “Top” engraving will be facing up. Make sure the factory O-ring stayed into the groove on the intake manifold. Tighten with a 5mm hex key.





Figure P

**Refer to Figure P for Steps 24-25**

Step 24: Using the factory screws, reinstall the throttle body to the aFe POWER throttle body spacer. The throttle body will be slightly clocked.

Step 25: Reconnect the harness to the throttle body. Make sure the connector is fully pushed in.



**Figure Q**

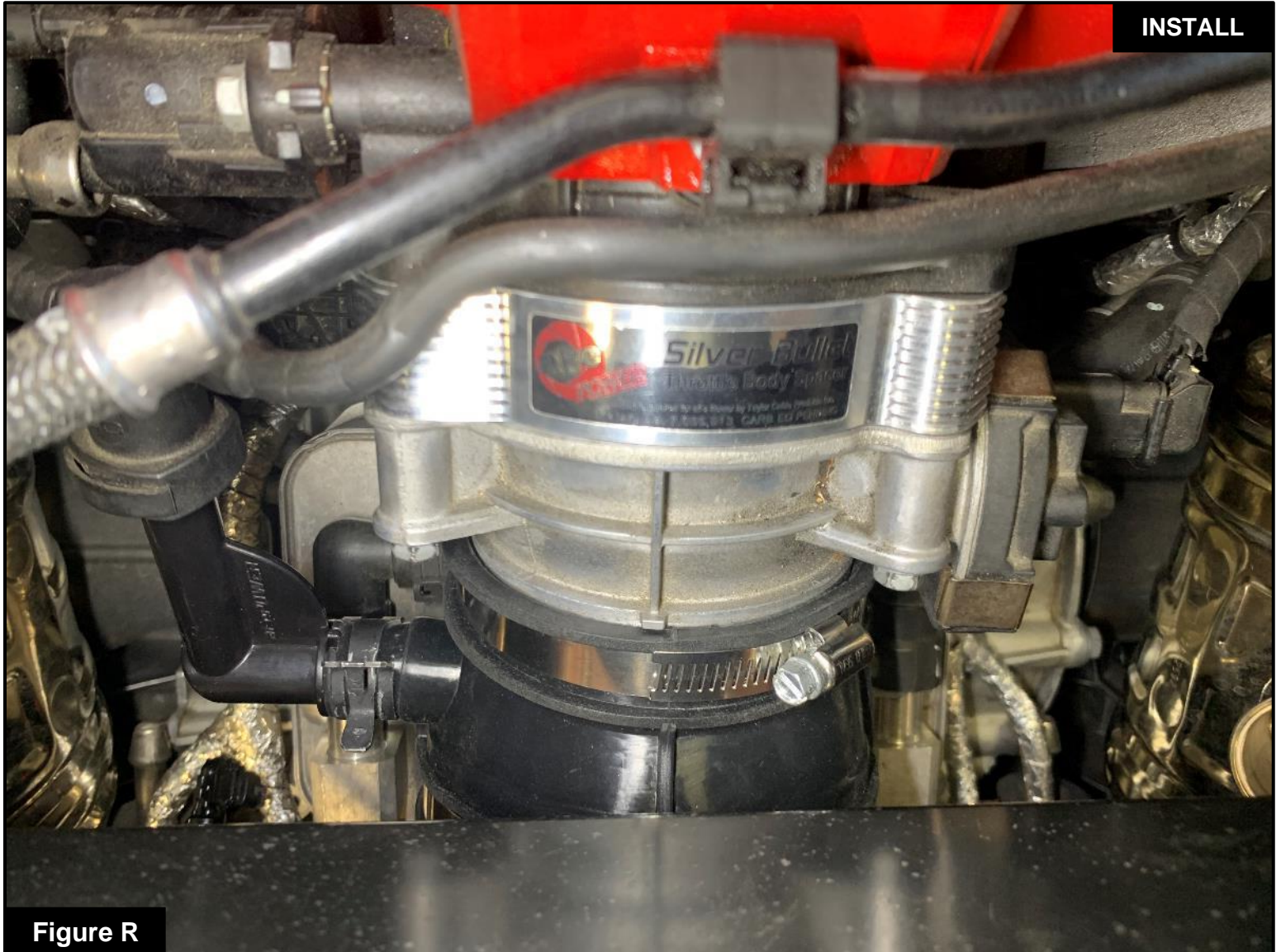
**Refer to Figure Q for Steps 26-27**

Step 26: Install the plastic fitting into the aFe POWER coupling and secure it with the provided spring clamp.

Make sure the small tab on the fitting is aligned with the notch in the coupling.

Step 27: Loosely place the clamps onto the coupling.



**Figure R****Refer to Figure R for Steps 29-31**

Step 29: Install the coupling onto the throttle body. The rib on top of the coupling should be pointing up.

Step 30: Reconnect the quick disconnect fitting to the aFe POWER fitting.

Step 31: Tighten the clamp securing the coupling to the throttle body with a 8mm nut driver or flathead screwdriver.

**Figure S****Refer to Figure S for Step 32**

Step 32: Push the factory air box into the aFe POWER coupling. Make sure the air box is back into its original position then tighten the clamp between the coupling and the air box.





**Figure T**

### **Refer to Figure T for Steps 34-36**

Step 34: Reinstall the (4) 10mm screws securing the front and rear of the airbox, and reattach the harness clips that were removed. Two of the screws will be reinstalled from the top of the engine and the two other ones from the trunk opening.

Step 35: Reinstall both air duct couplings and secure them with the factory screws.

Step 36: Reconnect the temperature sensor harness



**Figure U**

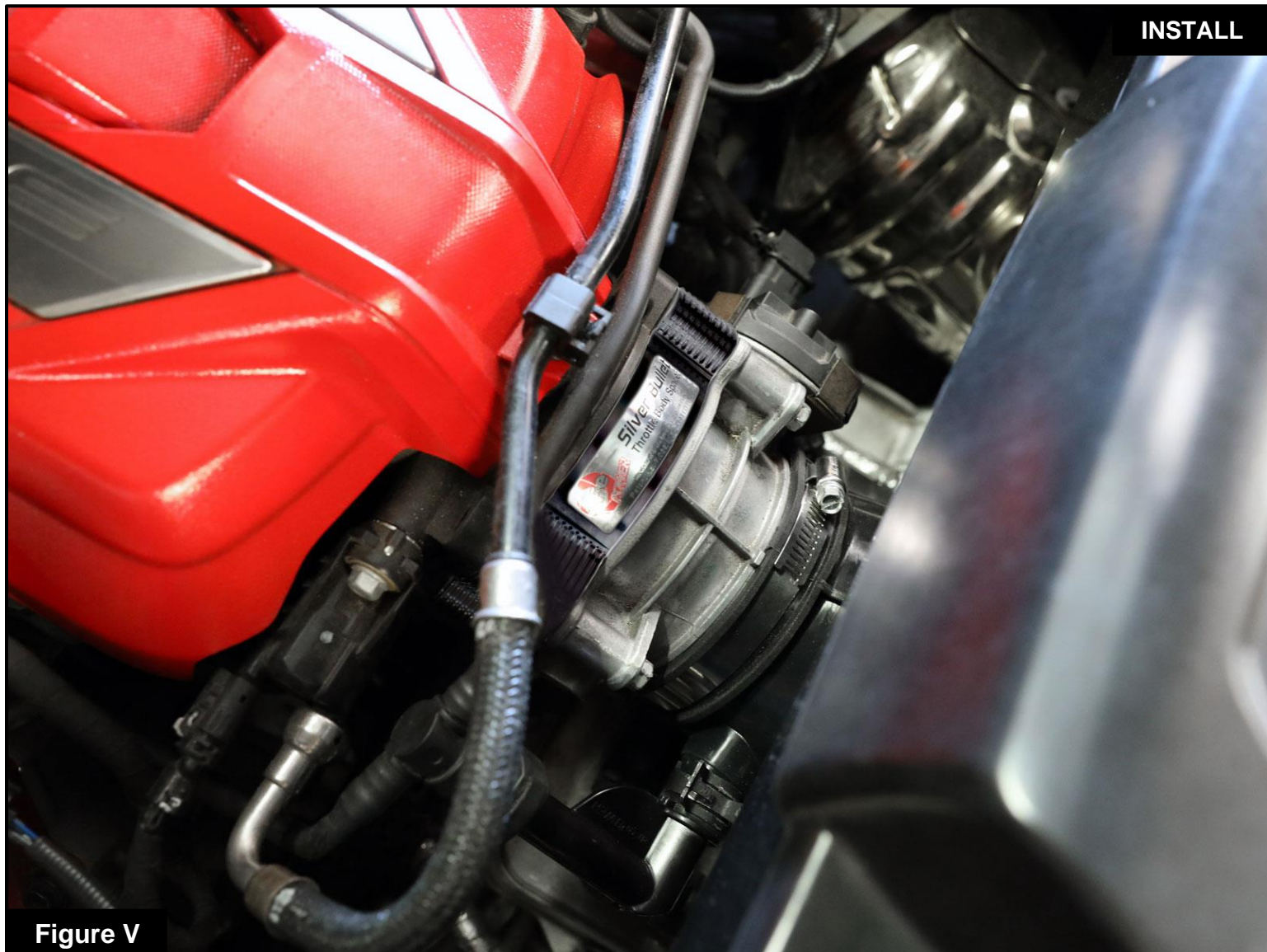
### **Refer to Figure U for Steps 37-39**

Step 37: Reinstall the plastic engine cover with the screws removed at step 5.

Step 38: Reinstall the carpet and roof latches. Secure them with the screws, hooks and clips removed at steps 2, 3 and 4.

Step 39: Reinstall the seal trim surrounding the trunk, removed at step 1.





**Figure V**

**Refer to Figure V for Step 41**

Step 41: Your installation is now complete. Verify all connection and screws are secured. Thank you for choosing aFe POWER!



**PAGE LEFT BLANK INTENTIONALLY**





**PAGE LEFT BLANK INTENTIONALLY**



***advanced FLOW engineering, Inc.***

252 Granite Street Corona, CA 92879  
TEL: 951.493.7100 • TECH: 951.493.7185  
E-Mail: [Tech@aFepower.com](mailto:Tech@aFepower.com)