



C8 Corvette Grille Insert Kit Installation

Part Number: CV-C8R190010-PASB

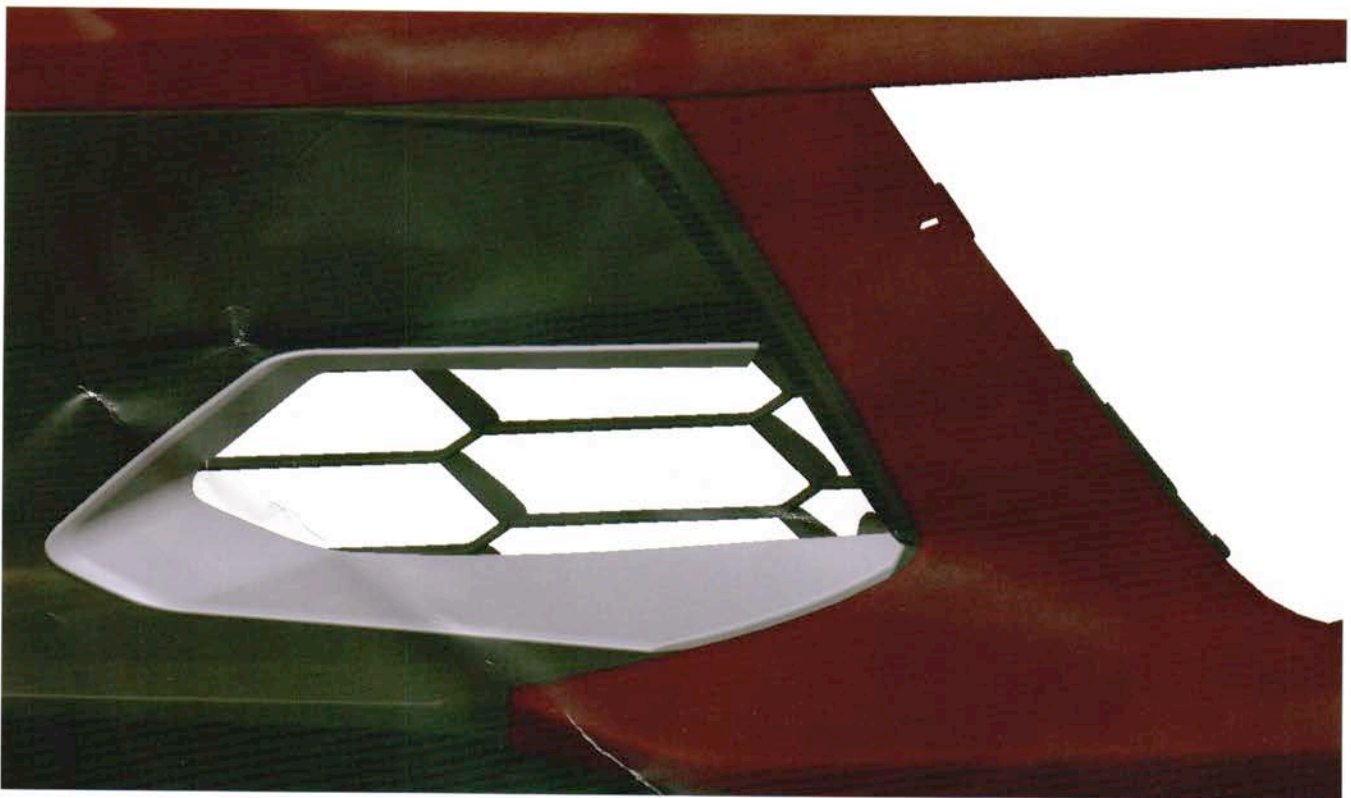
Required Tools:

- 50% Isopropyl Alcohol

CAUTION: If any part of this installation seems beyond your level of installation experience, please seek the help of a certified professional.

Installation Procedure:

1. Clean the installation area with soap and water, and then 50% isopropyl alcohol.
2. Before removing the tape release film, place one of the Grille Inserts onto the front fascia, as shown in the image below to get a feel for the proper alignment.



3. Pull the Grille Insert out, and remove the red tape release film from the underside of the part.
4. Carefully align the part back into the front fascia. **Once the tape makes solid contact with the vehicle, do not attempt to peel the Grille Insert back up to realign it, as the tape could be damaged.**

5. Once the Grille Insert is seated into the front fascia, press it firmly into the surface of the vehicle. Move your hand along the surface of the part, holding pressure at each location for a few seconds. This will ensure the tape forms a strong bond.
6. Perform this same procedure with the other Grille Insert.
7. If you wish to remove the parts at a later time, use a hair dryer (not a heat gun) at the edge of the part to heat the tape. Slowly and firmly peel up the Grille Inserts one area at a time. It should take approximately 20 minutes to remove without damaging the parts.

Completed Result:



Holley® Performance Products, Inc.
1801 Russellville Road
Bowling Green, KY 42101

Technical Support: 1-866-464-6553
Phone: 1-270-781-9741
www.holley.com

© 2022 Holley Performance Products, Inc. All rights reserved. Tous Droits Réservés.

199R12438
Date: 7-26-22