



## FBM650V – Installation Instructions

The **NOVISTRETCH™ FBM650V** mask is easily secured using snap fasteners integrated into the design. This requires snap-head screws, supplied in the hardware kit, be installed on the car as described below. The initial installation should require approximately 15 minutes to complete. After setup the mask can be easily installed and removed in just under one minute.

The FBM650V is designed for installation 2005-2013 6th Generation Base Model and Convertible Corvettes (this model is not designed for the 6<sup>th</sup> Generation Grand Sport, Z06 or 427). Enclosed you will find:

- FBM650V Mask
- Hardware Kit containing 12 snap-head screw studs; eight (8) J-Clips
- Installation Instructions and Warranty

### Installing your new NoviStretch™ Front Bumper Mask

**Tools Required:** Short handle Philips screwdriver; Flat-Blade Screw Driver, #15 Torx head screwdriver; socket wrench w/ 7mm socket

#### Step #1 and #2

Clean the bumper and surfaces under the car and the fender wells thoroughly (tar and grease remover is recommended). Turn the front wheels to gain easier access to the fender liner mounting screws that you will be replacing.

#### Step #3

Locate the mounting pins at the edge of the bumper inside the fender liner and remove the four (4) retaining pins that attach the fender liner to the front bumper starting with the top pin. **[Note: the retaining pin is a male/female assembly. The male piece can be pried loose from the female piece using a flat blade screwdriver. Insert the blade of the screwdriver in the slot at the edge of the pin and twist the screwdriver causing the pin to come free of the female piece]. After removing the male piece, the female piece can be removed].**

After removing the retaining pins, install a J-clip (Nipple side is toward the front of the car) at each of the four holes in the bumper. [The J-clip is designed to go around the edge of the fiberglass bumper and serves as the nut for the screw you will be installing.]. Reposition the fender liner aligning the holes in the liner with the holes in the bumper. Now install the four (4) snap-head screw studs. Repeat this step on the other side of the car.



Step 3

#### Step #4

Begin the installation by fastening the snaps on one end of the mask to the screws just installed on the edge of the bumper.

#### Step #5

Stretch the mask across the front of the bumper and attach to the other side of the car.

**Note:** the tension in the mask is normal and important to the overall performance of the product.

#### Step #6

Pull the bottom edge of the mask down under the bumper, noting the position of the snaps on the bottom edge of the mask. Replace the screws on the bottom of the bumper that best align with the snaps on the mask with a snap head screw stud. Fasten the snaps on bottom of the mask to the screws just installed on the bottom of the bumper.

#### Step #7

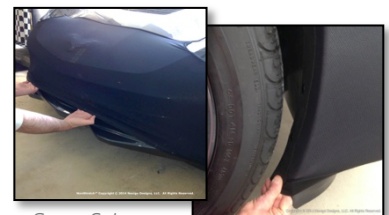
Locate and slightly loosen the screw holding the corner of the air dam on each side of the car allowing bottom edge of the mask to go between the bumper and the air dam. **Note:** This step is optional but recommended for best fit.

#### Step #8

Open the hood. Hold the top of the mask and pull it up to the hood opening. Secure the top corners of the mask to the body frame just inside the hood opening. Remove the screws on the frame that best align with the snaps on the mask and replace with a snap head screw stud. Secure the mask by fastening the snaps on the mask to the snaps just installed.



Steps 4 & 5



Steps 6 & 7



Step 8

### SPECIAL INSTALLATION INSTRUCTIONS

**Front License Plate Installation**– A front license plate may be installed over the mask without causing harm to the mask. The small holes made by the mounting screws will not cause the fabric to “run”. Thumbscrews may be used to make the removal of the license plate more convenient.

### CLEANING AND CARE INSTRUCTIONS

- The mask can be cleaned by rinsing in water to remove any dirt or debris then squeezing the water out and let air-dry. Wash (by hand) only as necessary. Use a concentrated soap solution on areas of the mask that may be particularly dirty.
- Always ensure areas covered by the mask are clean and free of sand and grit before installing the mask.
- For the best life do not leave the mask on the car while parked in the sun for extended periods.
- Avoid obstacles and low clearance areas in the roadway that may come in contact with the bottom of the car causing the mask to snag and the material to tear.



## **NOVIGO DESIGNS™ TWELVE (12) MONTH LIMITED WARRANTY**

Novigo Designs, LLC warrants this product against “defects in material and workmanship” for a period of twelve (12) months from the original date of purchase by the original consumer purchaser.

The “material defects” that can occur and are subject to coverage by this warranty are those specifically related to UV degradation and problems that can arise from the loss of elasticity due to degradation. “Workmanship” refers to the hardware and stitching that are part of the design and construction of the product.

During the warranty period, Novigo Designs will repair, or at its own option, replace all or part of the product that proves to be defective from normal wear and tear, provided the product is returned freight paid to Novigo Designs.

Your PURCHASE RECEIPT, or other proof of date of original consumer purchase along with the defective product must be provided when requesting warranty service to be performed.

This Warranty does not apply if, in the opinion of Novigo Designs, the product has been altered or damaged by accident, misuse, neglect or abuse. *Due to the nature of the application the product is subject to tearing if it comes in contact with road debris or the road surface such as driveway entrances/ exits; parking curbs, etc.*

The product is subject to tiny holes that can result from the residue of bugs, bird droppings, tree sap, etc.. This type of deterioration is not subject to warranty coverage and can generally be avoided by proper and frequent cleaning of the product.

In the event this product proves defective either in “Workmanship” or “Materials”, only repairs or remedy as stated in this warranty shall be recognized, and under no circumstances shall Novigo Designs or its authorized distributors be liable for any loss or damage, direct, incidental or consequential, arising out of the use of, or inability to use this product caused by any defect in the product.

Novigo Designs (and its authorized distributors) liability is limited to the materials and workmanship of the product. Novigo Designs is not responsible for damage caused by the product to the paint or finish of the vehicle. To avoid any possible damage and to get the maximum benefit from your Novigo Designs product, carefully follow the installation and care instructions provided.

**Novigo Designs, LLC.**