



P.O. Box 1719  
Corona, CA 92878  
Support: 951-493-7100  
www.aFeilters.com

## Intake Kit Installation Instructions: '97-'04 Chevrolet Corvette C5 V8-5.7L

<b>Kit Part #</b>	54-10052	<b>Tools Required:</b>	<b>Part List:</b>	
<b>Make:</b>	Chevrolet	5/16" nut driver	1 Air Filter (P/N# 24-90033)	
<b>Model</b>		Heat Gun or Hair Dryer	1 Intake Tube	
<b>Year</b>			1 Coupling 4"x 4"x 3"	
<b>Engine</b>			1 Clamps #056	
Corvette	'97-'04		2 Clamps #064	
			1 Tube Fitting, 3/4" adapter	

Step 1



Complete kit. Make sure all components listed are included prior to beginning installation.

Step 2



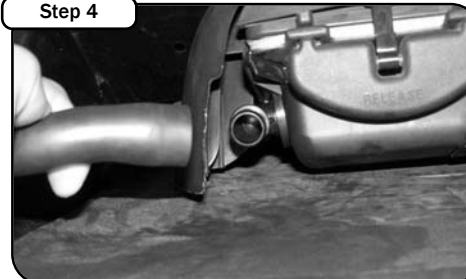
Complete stock intake.

Step 3



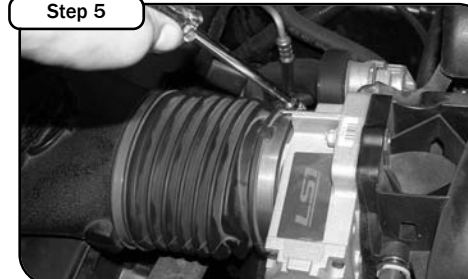
Remove MAF sensor plug.

Step 4



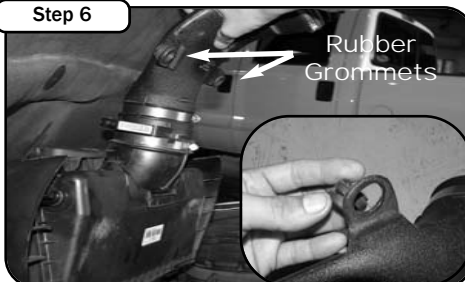
Unplug the air breather hose.

Step 5



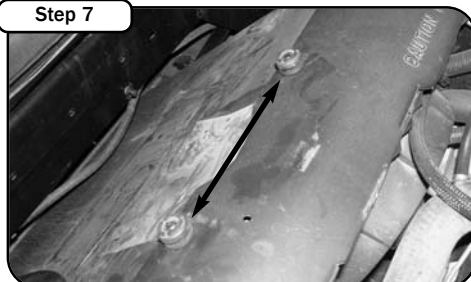
Loosen the clamp holding the OE intake tube to the throttle body.

Step 6



To remove stock housing lift up and pull out. Remove the two rubber grommets on the OE intake tube.

Step 7



Place the two rubber grommets on the two pins located on the engine cover.

Step 8



Loosen the clamps holding the OE intake tube to the OE air box. Remove the tube.

Step 9



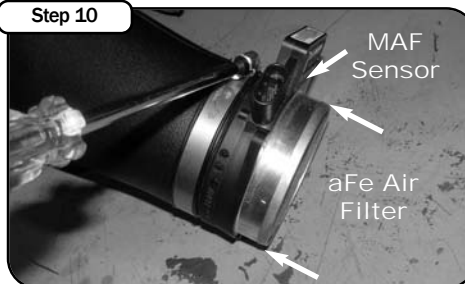
Remove the MAF sensor from the OE air box.

Step 11



Insert the MAF sensor into the aFe intake tube. Make sure to align the MAF sensor to the groove on the intake tube. This assembly requires a snug fit. If fit is too tight the tube can be heated with a hair dryer or heat gun to allow insertion.

Step 10



After you aligned and inserted the MAF sensor, tighten the clamp. Insert and secure the aFe air filter onto the MAF sensor.

Step 12



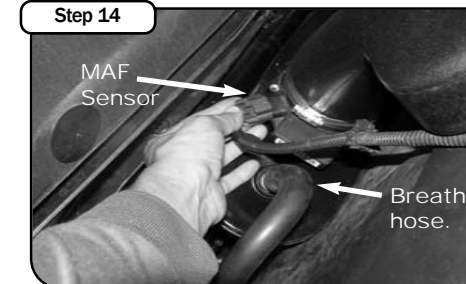
Insert the air hose inlet adapter into the air filter. Sit the intake into position aligning the two rubber grommets with the dimples on the aFe intake tube.

Step 13



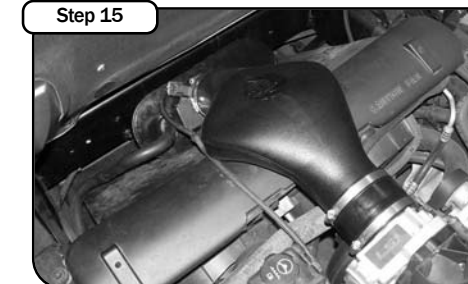
Secure the coupler onto the throttle body and secure in position.

Step 14



Reconnect the MAF sensor and air inlet hose to the air filter.

Step 15



Your installation is now complete. Make sure you tighten all clamps and check all electrical connections. Re-check periodically.

Note: Filter Cleaning and Re-oiling: When cleaning your aFe filter, be sure to use only aFe's "Restore Kit" (aFe P/N: 90-50001 blue oil aerosol, or aFe P/N: 90-50501 blue squeeze bottle oil or aFe P/N: 90-50000 gold oil aerosol, or aFe P/N: 90-50500 gold squeeze oil).  
Filter Replacement: Magnum FLOW PN: 24-90033 (black w/blue media).