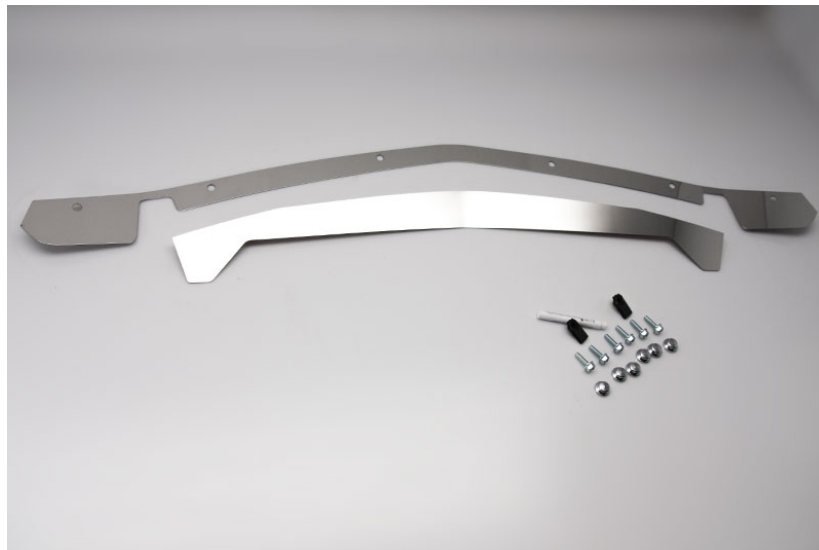




AMERICAN CAR CRAFT INSTRUCTIONS

2014 Corvette Stingray – Nose Cap 2pc

PART# 053069



Liner info: Your new accessories will come to you with a protective surface liner. Leave this liner in place until instructed to prevent finger prints and/or possible scratches during installation.

Parts Included:

- 6 – M6 1.0 Flange Bolts
- 6 – 124 Chrome Bolt Head Covers
- 2 – M6 Clip Nuts
- 2 – Stainless Steel Parts
- 1 – Adhesive Promoter Pen

This two piece nose cap is very easy to install and will customize a section of your engine bay that would otherwise look unfinished.

- 1- The first step will be to remove all the factory hardware securing the front nose clip. You will notice that there will be two plastic retainers as well as four factory bolts and clip nuts. Remove the two plastic retainers by pulling up the very center nail. This will allow the base section to simply lift out of the factory holes.
- 2- Once you have unbolted the four factory bolts you will notice that the hole will contain a removable clip nut just under the composite painted nose section. In order to do this you



AMERICAN CAR CRAFT INSTRUCTIONS

will need to use a small pick or scratch awl. Look closely into the hole and you will see a small ring which locks the clip nut into position. Simply lift this small ring so as to allow you to slide the clip nut out of its hole.

- 3- Now that you have successfully removed all of the factory hardware you can proceed to install the American Car Craft replacement hardware. You have been provided with six 6MMx 3/4" flange bolts and two 6MM clip nuts. Simply slide the two clip nuts into the outer most factory holes making sure that the thread of the clip nut faces downward.
- 4- Tilt the factory hood down slightly to allow yourself to slip the new stainless nose cap into position under the hood rim and then align all six holes with the factory holes on the car. Remove the protective liner for this section and then install all six 6MM bolts by hand until they are all started. Then snug each of the bolts. Do not over tighten these bolts as this will distort the stainless steel creating an unsightly appearance. You will also want to make sure that the stainless is tucked nice and snug into the nose of the car so as to not allow the stainless section to scrape against the hood hinge arm.
- 5- The last thing to do will be to prepare the black metal just under the section you have just installed with the rubbing alcohol and the provided adhesive promoter pen. First, wipe the area clean with rubbing alcohol, then use the adhesive promoter. Note that this chemical is not a cleaner but an adhesive accelerator and must be used as such in order to achieve a nice permanent bond for the next section. Simply pinch the center of the pen releasing the chemical and apply it to the long area under the main section. Before you peel and stick this last section take a few minutes to set the section into position. Your section comes to you flat so you will need to gently curve this section to match the contour of this area. The first area would be to the dead center of the section. Center the piece as best you can and then simply apply a little pressure to the center area until you are able to put a mild bend at the center until the entire section contours in place. Once you are satisfied with your shaping, simply peel the red release liner from the back of this section and then carefully set it into place pressing firmly along its length to set the bond.
- 6- You have been provided with six decorative chrome bolt head covers. Set each of the covers onto the bolt head and press firmly to set. Then remove the remaining blue protective liner to finish the installation.

If any questions or problems occur during installation, please contact us at 727-861-1500.

Thank You and Enjoy Your Purchase!

AMERICAN CAR CRAFT

18924 SAKERA RD HUDSON FL 34667

Phone: 727 861-1500

Fax: 727 861-1520