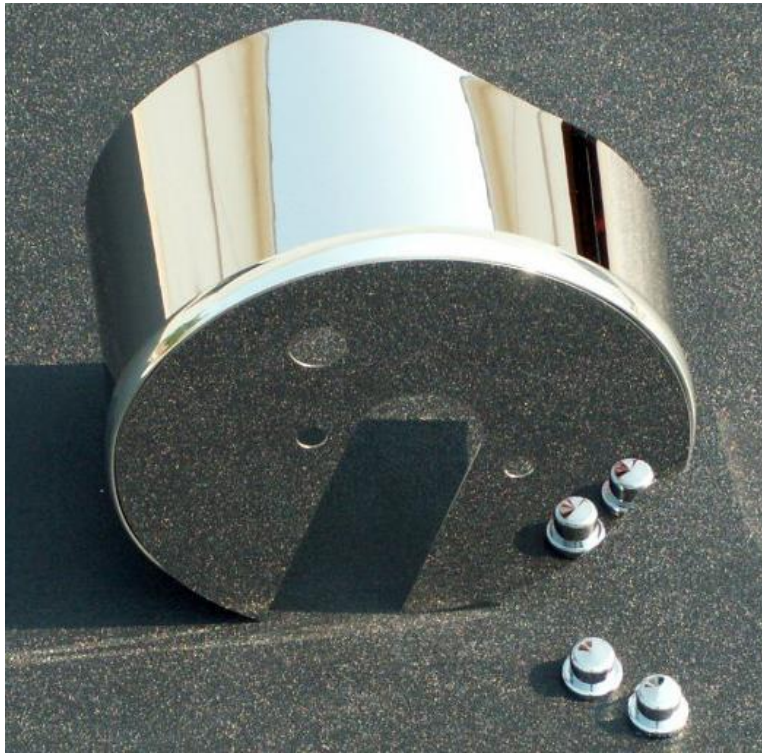




AMERICAN CAR CRAFT INSTRUCTION

C6 OR C5 CORVETTE COMPONENT BRAKE BOOSTER COVER

PART# 033015 patent pending



PARTS INCLUDED:

- 1-Stainless Brake Booster Cover
- 2-120NC Chrome Nut Covers

Your new accessory comes to you with a clear protective liner. This liner will help to keep your new parts clean during installation. You will be instructed when to remove the liner during the detailed installation.

1. Remove the two 10mm nuts securing the water tank and lift it out of its position and rest it over the alternator temporarily.
2. Remove the vacuum line and the two nuts securing the master cylinder. Pull the master forward off the two bolt studs.
3. Slide the new booster cover over the master cylinder flange base and line up the holes in the booster cover with the holes in the master. **CAUTION:** Make sure the booster cover is placed in front of the master cylinder flange and **NOT** behind! If the master cylinder is tightened over the booster cover you will crush the new cover and possibly damage the factory booster.
4. Reposition the master onto the bolt studs as you carefully allow the new cover to slip over the factory booster. At the same time you will need to effectively align the new cover over the booster stud bolts. Jostle

the assembly into position so as to allow you to FINGER TIGHTEN (DO NOT OVERTIGHTEN) the two master cylinder nuts. Remove the protective liner and tighten down (DO NOT OVERTIGHTEN) the master and cover.

5. You have been provided with two decorative chrome nut covers. Apply a small dab of 100% clear household silicone to the covers and install them over the two factory bolts to finish the installation.
6. Replace and secure the factory water tank.

Thank you and enjoy your purchase!

If any questions occur during installation please contact

AMERICAN CAR CRAFT

18924 SAKERA ROAD-HUDSON FLORIDA 34667

Phone # 727-861-1500 Fax # 727-861-1520

www.americancarcraft.com