

C7 RGB COVE/HOOD LED KIT

Get familiar with this kit by completely reading the instructions before installation.

While it is possible to install the kit without raising the front wheels off the ground, it is more difficult. We recommend at least raising the front wheels. Removal of the front wheels makes installation much easier.

Tools needed

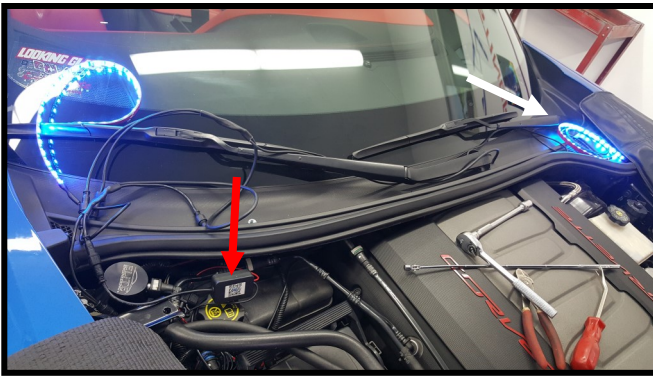
A smart phone 7 mm socket or nut driver #15 torx bit, 13mm socket, extension, ratchet light source gorilla tape bungie cords
Extending magnet flat prying tool (panel removal tool). 1/8" drill bit.

Download the LED BLE app. Skip this step if you have the key fob system.

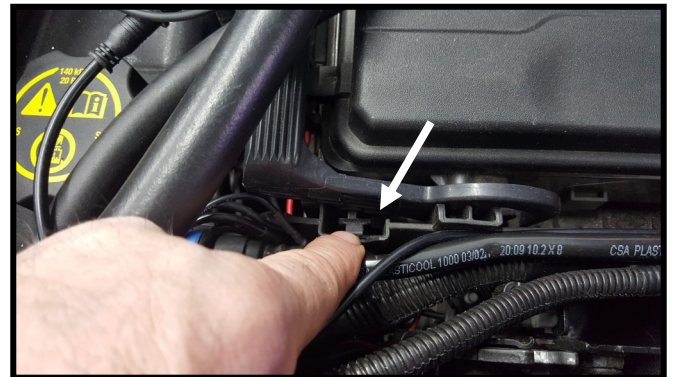
Search the APP store or Download a code reader app. Scan code on the front of the control box and install APP. APP is called LED BLE.

Tips for using adhesion promotor

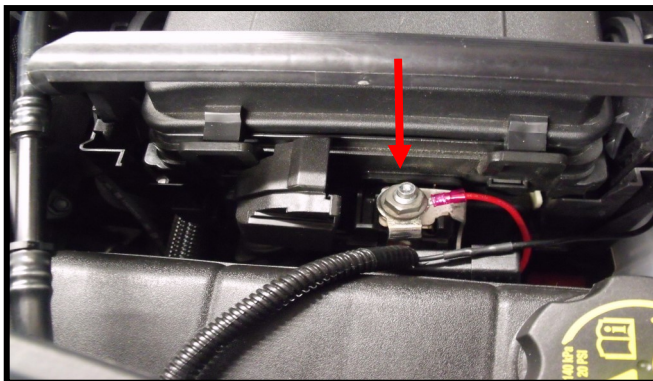
Cut the very top off the packet. Squeeze the fluid back into the packet as you remove the sponge. Only a thin coat is needed so preserve The fluid by folding the top over and sealing it up until further use. Do this each time you use the sponge.



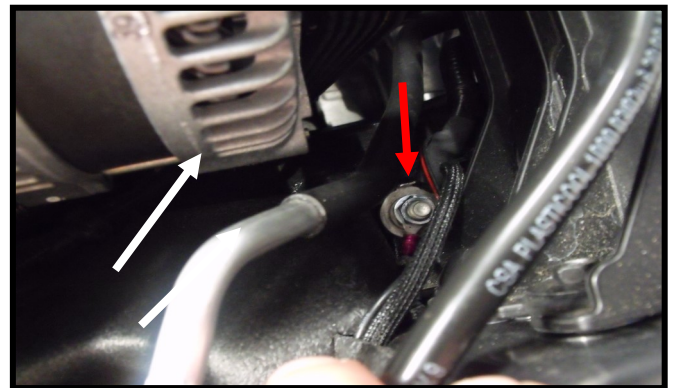
Unpackage the kit and place the remote box close to the fuse box. (red arrow) You can also place it under the hood latch assembly. String the strip with the longest wire across the cowl to the drivers side. (white arrow).



To gain access to the positive connection release these tabs on each side of the rear of the fuse box while raising the handle. Release the cover over the positive terminal

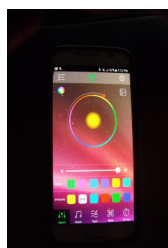


Install the red loop over the positive connection and use supplied nut and tighten. Keep in mind where you want to mount the box and route your wires accordingly. You can re-route them later to hide wires.



On Z51 cars you can use the 10mm bolt on top of the oil tank for the ground wire. Non Z51 cars, route the black wire along the plastic piping going towards the alternator (white arrow). Secure black wire on the ground terminal below the alternator (red arrow) using the supplied nut. This is where a magnet comes in handy. Its easy to drop the nut.

You can now test the system. Make sure your Bluetooth is turned on. Open the app and tap the on/off button below the gear icon. Give it a few seconds to connect. You may have to cycle the on/off button a couple times. On/off button only appears when in the COLOR mode. Tap the gear icon to find the operation guide.

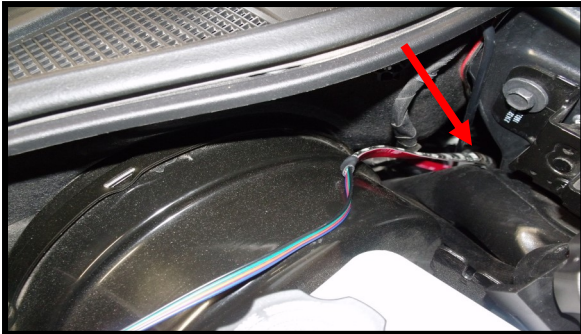




Turn the wheel out on the side you're working on. Use a pry tool to pop the front splash guards out. There is also a screw underneath if you want to take it all the way off. Repeat on both sides.



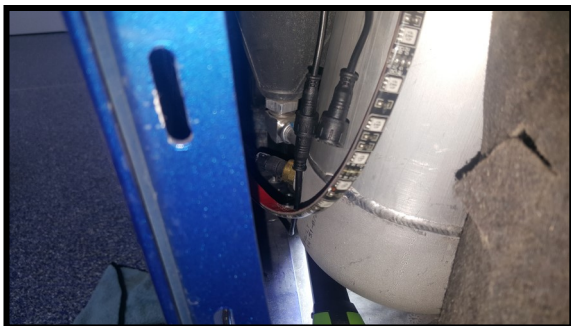
Use a # 15 torx to remove the 3 screws behind the splash shield. Pull back the inner fender panel to get to the cove area. Place a light inside the fender to guide the led strips in place.



Feed the drivers side led strip past the brake booster and down into the area where you placed the light.



On the passenger side guide the led strip and the extra lead down into the cove area. Use the light as a guide. This shows a Z51 car where it goes behind the oil tank near the coolant tank.



This shows the led strip and extra lead inside the fender cove. The extra lead is to connect the rear fascia kit if you are installing it. Use bungee cords to keep fender shield pulled back.



Wipe the mounting area a couple inches away from the vent for best results. Apply the adhesion promotor then peel the backing off the strip and mount it as shown. Its not easy so be patient.

IMPORTANT; We put the cord at the bottom then secure the cord to the inside of the fender with gorilla tape. Be sure to do this.



After the strips are mounted you can hide the cable behind the heat shield under the cowl lip on the passenger side. Tuck the cable under the shield all the way over to the drivers side.



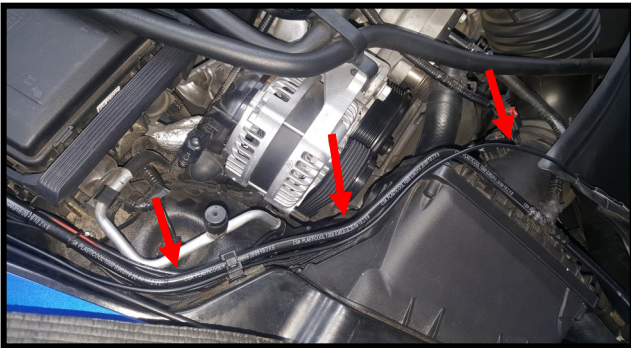
There are 2 leads on the harness near the control box. One is for the hood vent strip and one for the grill strip if used.



Now you can mount the hood vent strip. Wipe the mounting area with the supplied alcohol pads. Apply the adhesion promotor to the edge of the ducting. Position the strip as shown. Center the strip on the ducting so the wire comes out as shown in the next picture. Be sure to work the strip into the center and corners as this is the most likely place for it to want to pull off. Keep working it until it fits the corners well.



To secure the wire in place drill a 1/8" hole in the ducting below the wire and use a wire tie to secure the wire to the ducting. You can use more than 1 tie if you wish.



Route the wire along this tubing toward the connectors on the control box. Secure with wire ties.



Pull back the nut on the controller connector so you can see the arrows. Line up the arrows and slide the connector together and tighten the nut. Test the lights again.

IF YOU ARE INSTALLING THE REAR FASCIA KIT LEAVE THE PASSENGER SIDE SHIELDS OFF TO COMPLETE INSTALLATION OF THAT KIT ALSO.

Once all lights are installed and working you can begin to re-install all the shields you removed earlier. You can now mount the control box under the cowl or under the hood latch assembly or where ever its convenient. Re-route wires if you need to so you can hide them under existing wiring. Be sure to tape up the wiring in the fenders to keep the strips from pulling off. When installing the front splash shields be sure to insert the tab on the shield with the slot in the inner fender panel.

If you removed the wheels be sure to torque them to 100 ft lbs!!

