

C7 REAR FASCIA

This is an additional kit that works with our C7 front fender cove kit. Install the fender cove kit first leaving the front passenger side splash shield off. This kit connects to the extra lead by the passenger side cove led strip.

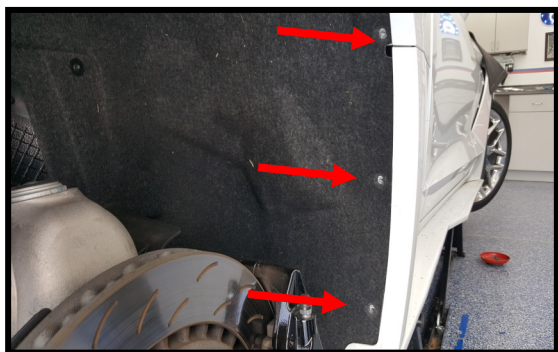
READ ALL INSTRUCTIONS BEFORE INSTALLATION!

Tools Needed

Panel removal tool (available at any parts store) 7mm socket, ratchet #15 torx bit needle nose pliers gorilla tape 2 wire coat hangers or a fishing tool electrical tape light source jack and jack stands wheel removal tools magnet.

USE OF THE ADHESION PROMOTOR

Cut the very top off the packet, as you pull the sponge out, squeeze the fluid back into the packet. Fold the top over to keep the fluid from drying out. Apply only a thin coat of promotor to the immediate area where the strips are mounted. Re dip the sponge until its dry. 2 packets should be enough if used properly.



Raise the vehicle and remove the right rear wheel. Remove the 3 #15 torx screws. There is 1 x 7mm screw underneath to remove also. Remove the front wheel splash shield and #15 torx screws if you haven't already.



The inner fender panel is very flexible so you can untuck it from behind the fender then lift the bottom up and out to gain access to the rocker panel area to fish the extension cable from front to rear.



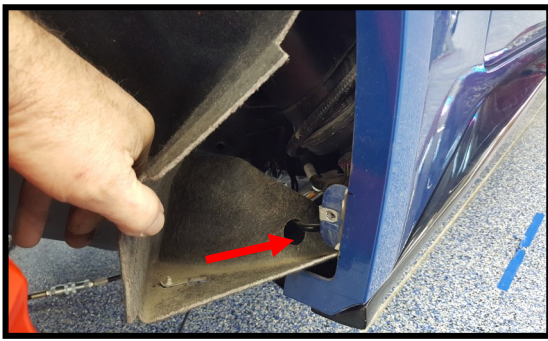
Looking toward the front of the car in the dark recess you just uncovered there are 2 wads of stuffing that need to be removed. They are stuffed into the rocker panel area to block debris so you may have to reach way in to grab them.



Using a long stiff wire (straightened coat hangers taped together works), feed the wire all the way from the back to the front cove area. Wire will come out at the bottom of the inner front fender. Tape the end of the extension cable with the nut on it to the fishing wire and pull it through to the back



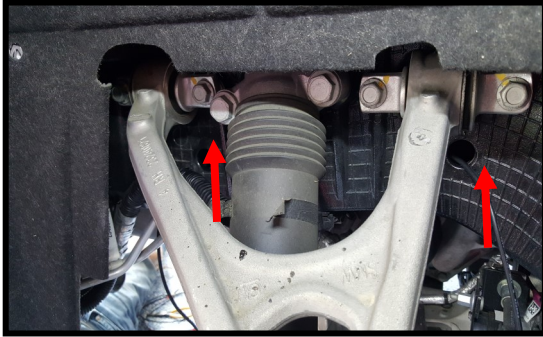
Line up arrows on the connector and plug it in to the extra lead by the front cove led strip. Tighten the nut.



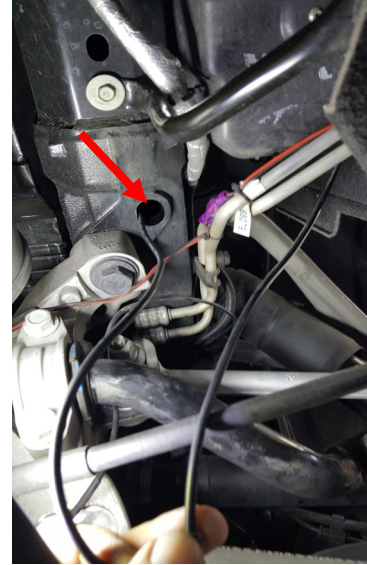
Route the cable at the back through the hole in bottom of the fender panel.



Route the wire behind the brake scoop up towards the frame.



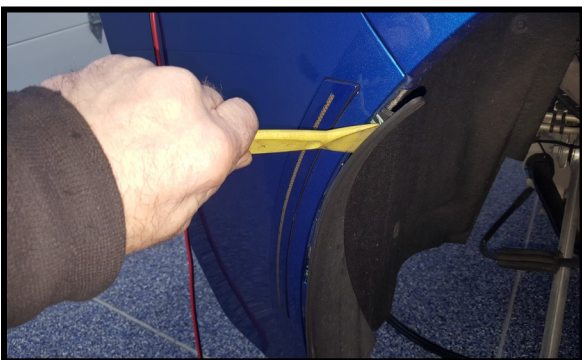
There are 2 holes in the frame you can use to isolate the wire from the wheel area. You can use a coat hanger to tape the wire to and fish from one hole to the next. You could also wire tie the cable to the wiring below the holes but it won't be as protected. You can also fish it to the hole in the next picture which is on the bottom of the frame further back.



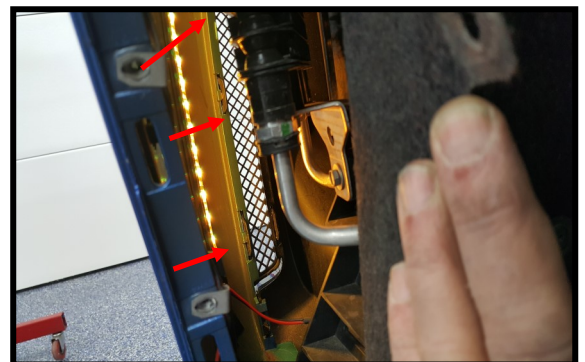
Insert a plastic removal tool between the taillight bezel and the rear fascia. The next picture shows the tabs you are releasing. Pull out on the bezel as you work your way around. Remove both.



There are 3 on the top and bottom, 3 on the wide side and 2 on the narrow end. Pull out as you release the tabs.



Pry both rear splash guards out. Remove the 2 x #15 torx screws. Pull the fender shield back and bungee cord back so you can see inside the quarter panel.



Looking through the quarter panel you can see the lower rear grills. There are 3 tabs on each side you need to release to remove it. Release the bottom ones then pull out while you release the rest of them. Get the top 2 through the taillight opening



Lay out the rear kit with the connection lead on the passenger side. Lay the center exhaust section on top of the tailpipes and route the side led strips behind the fascia and out towards the taillight openings hanging the short led strip out of the taillight opening. Place a light behind the lower rear vent so you can see where to route the leds. Line up the arrows on the connector and test before mounting leds.



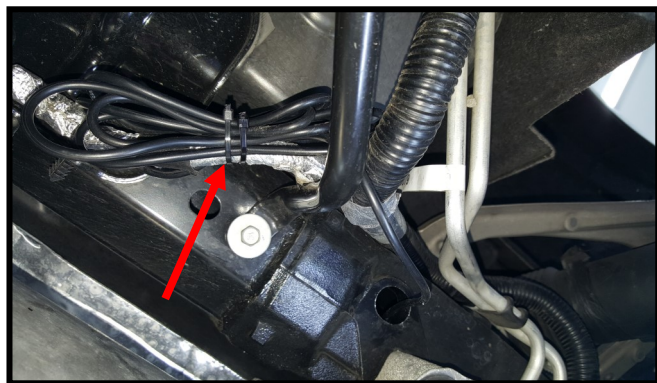
Wipe the front most edge of the area over the tailpipes with alcohol pads then apply a thin coat of adhesion promotor. Reseal packet so it doesn't dry out. Center the exhaust strip and attach it along the front most edge as shown. Always route cables away from the exhaust.



Remove the backing from the cable clips before you stick the ends of the led strips. Be sure to prep this area with adhesion promotor. Come back and press the clips in place after a few minutes.



This is looking down through the taillight opening to show where to mount the side led strips. Mount them a couple inches forward of the vents. Wipe with alcohol then apply adhesion promotor sparingly. Center the strips in the openings and peel the backing off to apply. Always tape the cables to the panel to prevent the strips from pulling off. (red arrows). Repeat on both sides.



Now go back and tape down the cables wherever you can. We tape them to the bottom of the rear fascia where the cables go out to the side vents. Wipe the panels first as they will be dirty. Finally bundle the extra cable and tie it up away from the exhaust system.

Once finished check all the cables and tape down where necessary. The rear vents and taillight bezels snap back into place. Put the stuffing back into the bottom of the rocker area. Secure all the panels you removed. Make sure you don't have any extra screws!

Don't forget to torque any wheels you removed to 100 ft lbs.

100 ft lbs.

