

C7 RGB COVE/HOOD LED KIT

Get familiar with this kit by completely reading the instructions before installation.

While it is possible to install the kit without raising the front wheels off the ground, it is more difficult. We recommend at least raising the front wheels. Removal of the front wheels makes installation much easier.

Tools needed

A smart phone 7 mm socket or nut driver #15 torx bit, 13mm socket, extension, ratchet light source gorilla tape bungie cords
Extending magnet flat prying tool (panel removal tool).

Download the App.

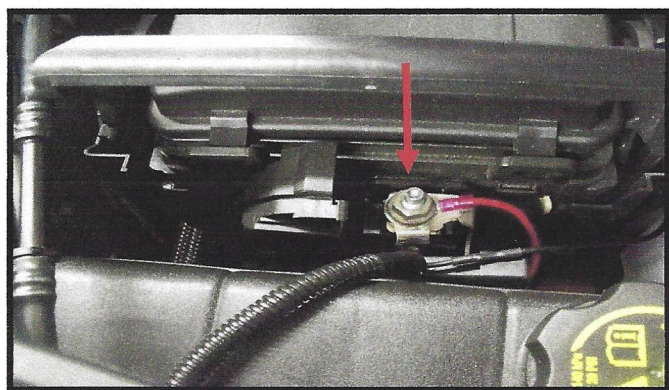
Download a code reader app. Scan code on the front of the control box and install APP. APP is called LED BLE.

Tips for using adhesion promotor

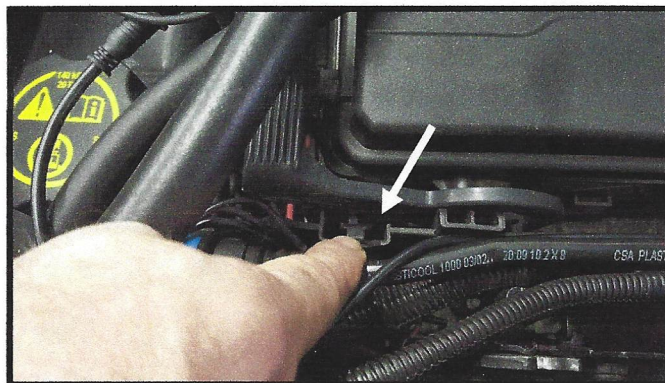
Cut the very top off the packet. Squeeze the fluid back into the packet as you remove the sponge. Only a thin coat is needed so preserve the fluid by folding the top over and sealing it up until further use. Do this each time you use the sponge.



Unpackage the kit and place the remote box close to the fuse box. (red arrow) You can also place it under the hood latch assembly. String the strip with the longest wire across the cowl to the drivers side. (white arrow).



Install the red loop over the positive connection and use supplied nut and tighten. Keep in mind where you want to mount the box and route your wires accordingly. You can re-route them later to hide wires.



To gain access to the positive connection release these tabs on each side of the rear of the fuse box while raising the handle. Release the cover over the positive terminal

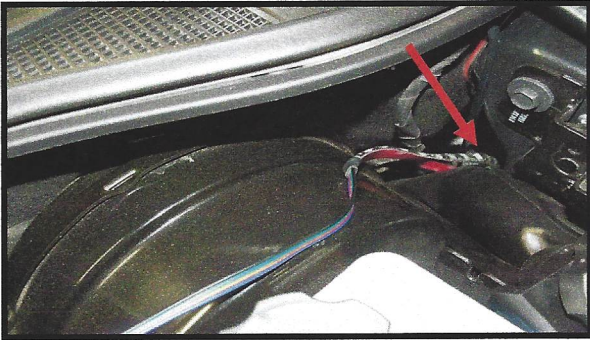


On Z51 cars you can use the 10mm bolt on top of the oil tank as a ground point. Non Z51 cars, route the black wire along the plastic piping going towards the alternator (white arrow). Secure black wire on the ground terminal below the alternator (red arrow) using the supplied nut. This is where a magnet comes in handy. Its easy to drop the nuts.

You can now test the system. Make sure your Bluetooth is turned on. Open the app and tap the on/off button below the gear icon. Give it a few seconds to connect. You may have to cycle the on/off button a couple times. Tap the gear icon to find the operation guide.



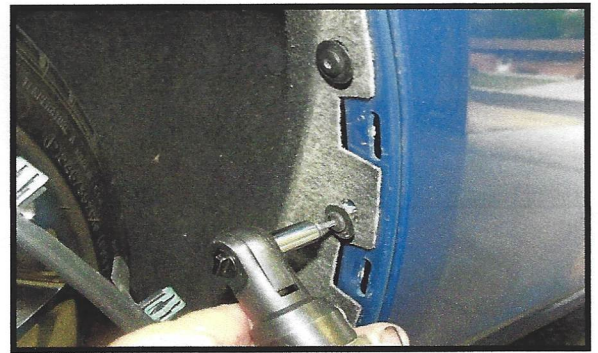
Turn the wheel out on the side you're working on. Use a pry tool to pop the front splash guards out. There is also a screw underneath if you want to take it all the way off. Repeat on both sides.



Feed the drivers side led strip past the brake booster and down into the area where you placed the light.



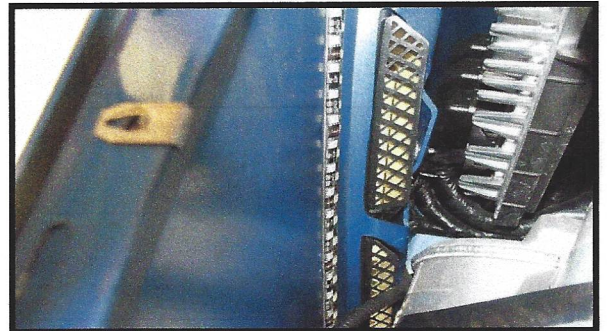
This shows the led strip and extra lead inside the fender cove. The extra lead is to connect the rear fascia kit if you are installing it. Use bungee cords to keep fender shield pulled back.



Use a # 15 torx to remove the 3 screws behind the splash shield. Pull back the inner fender panel to get to the cove area. Place a light inside the fender to guide the led strips in place.

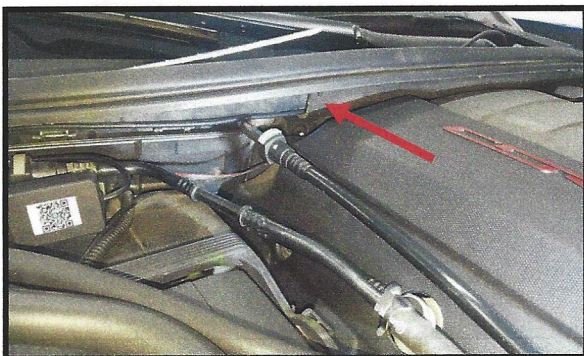


On the passenger side guide the led strip and the extra lead down into the cove area. Use the light as a guide. This shows a Z51 car where it goes behind the oil tank near the coolant tank.



Wipe the mounting area a couple inches away from the vent for best results. Apply the adhesion promotor then peel the backing off the strip and mount it as shown. Its not easy so be patient.

IMPORTANT; We put the cord at the bottom then secure the cord to the inside of the fender with gorilla tape. Be sure to do this.



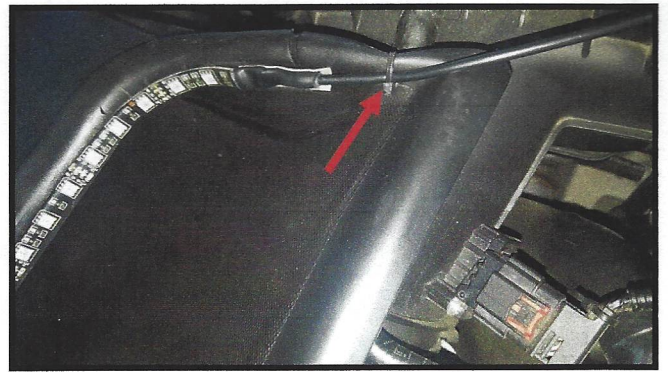
After the strips are mounted you can hide the cable behind the heat shield under the cowl lip on the passenger side. Tuck the cable under the shield all the way over to the drivers side.



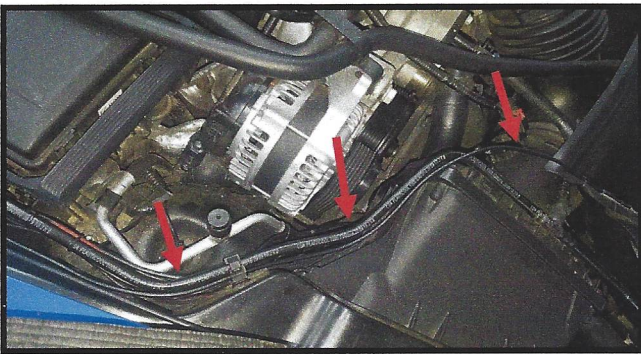
There are 2 leads on the harness near the control box. One is for the hood vent strip and one for the grill strip if used.



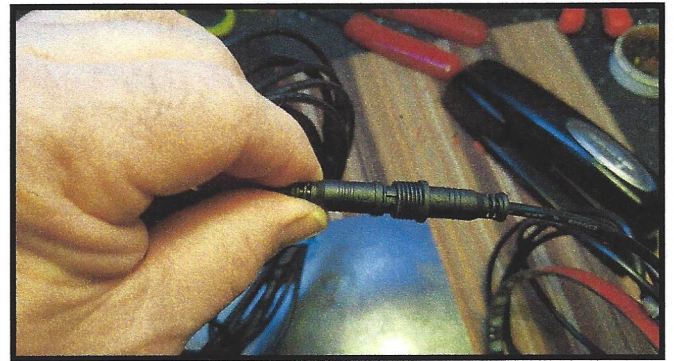
Now you can mount the hood vent strip. Wipe the mounting area with the supplied alcohol pads. Apply the adhesion promotor to the edge of the ducting. Position the strip as shown. Center the strip on the ducting so the wire comes out as shown in the next picture. Be sure to work the strip into the center and corners as this is the most likely place for it to want to pull off. Keep working it until it fits the corners well.



To secure the wire in place drill a 1/8" hole in the ducting below the wire and use a wire tie to secure the wire to the ducting. You can use more than 1 tie if you wish.



Route the wire along this tubing toward the connectors on the control box. Secure with wire ties.

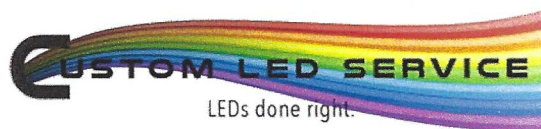


Pull back the nut n the controller connector so you can see the arrow. Line up the arrows and slide the connector together and tighten the nut. Test the lights again.

IF YOU ARE INSTALLING THE REAR FASCIA KIT LEAVE THE PASSENGER SIDE SHIELDS OFF TO COMPLETE INSTALLATION OF THAT KIT ALSO.

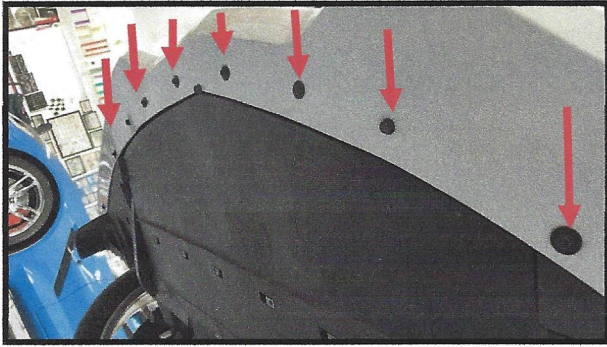
Once all lights are installed and working you can begin to re-install all the shields you removed earlier. You can now mount the control box under the cowl or under the hood latch assembly or where ever its convenient. Re-route wires if you need to so you can hide them under existing wiring. Be sure to tape up the wiring in the fenders to keep the strips from pulling off. When installing the front splash shields be sure to insert the tab on the shield with the slot in the inner fender panel.

If you removed the wheels be sure to torque them to 100 ft lbs!!

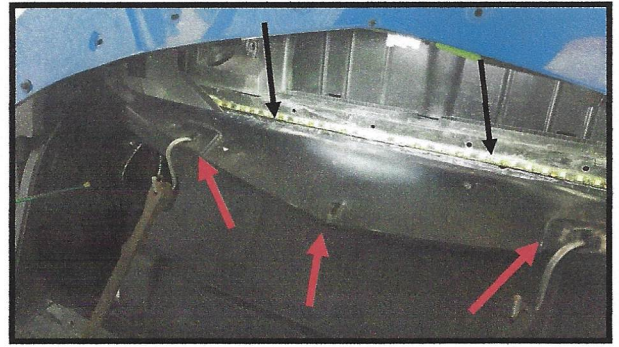


LEDs done right.

C7 LED GRILL STRIP



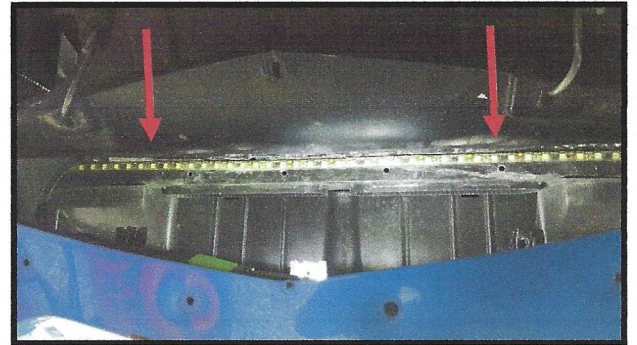
Raise the front of the car so you can get at the fascia screws. Remove the seven 8mm screws. (red arrows). Also remove the 4 x 10mm bolts at the rear of this same panel and slide it rearward to remove it.



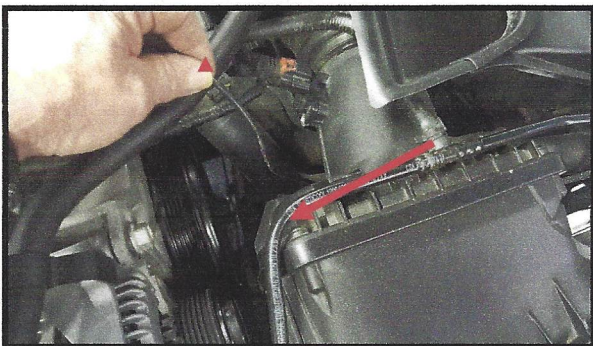
Some cars will have an oil cooler here. If so, remove the 2 bolts on each end and swing it out of the way. Otherwise remove the 4 screws that hold the front of the lower radiator shroud. (red arrows). This panel is very flexible so pull it back and secure with bungee cords as shown. You can see where the LED strip mounts (black arrows).



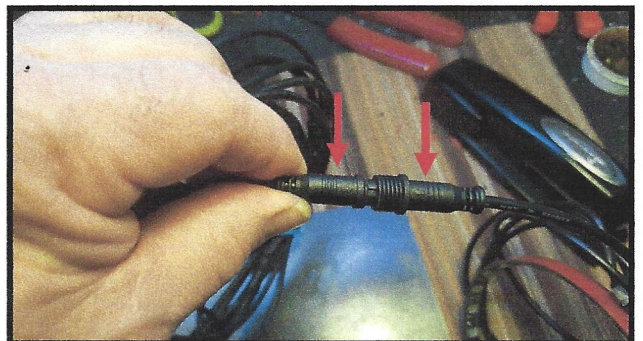
Route the led cable through any opening on the passenger side of the air box. It will come out below the wiring harness below the hood hinge assembly in the engine compartment.



Cut the very top off the adhesion packet. Squeeze the excess fluid back into the packet as you remove it. Fold the top over and seal to preserve the remaining fluid for use on other kits. Center the strip in the grill opening and mount it to the bar as shown. Tape the wired end down with duct tape.



Find where the led wire came through in the engine compartment and route the wire under the air filter housing and up by the alternator. Route the cable towards the extra lead on the control box using the same path as the hood vent cable.



Pull back the nut on the connector on the control box so you can see the arrows. Line up the arrows and connect the cable with the plastic nut. Test the led strip. Secure the wires away from the alternator or any moving parts with the wire ties. Once everything is working you can re-assemble the panels you took off by reversing the removal procedures.

C7 REAR FASCIA

This is an additional kit that works with our C7 front fender cove kit. Install the fender cove kit first leaving the front passenger side splash shield off. This kit connects to the extra lead by the passenger side cove led strip.

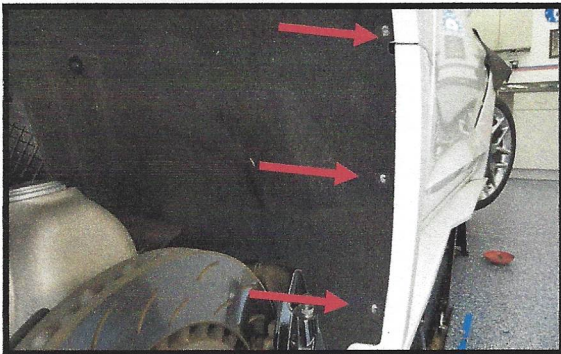
READ ALL INSTRUCTIONS BEFORE INSTALLATION!

Tools Needed

Panel removal tool (available at any parts store) 7mm socket, ratchet #15 torx bit needle nose pliers gorilla tape 2 wire coat hangars or a fishing tool electrical tape light source jack and jack stands wheel removal tools magnet.

USE OF THE ADHESION PROMOTOR

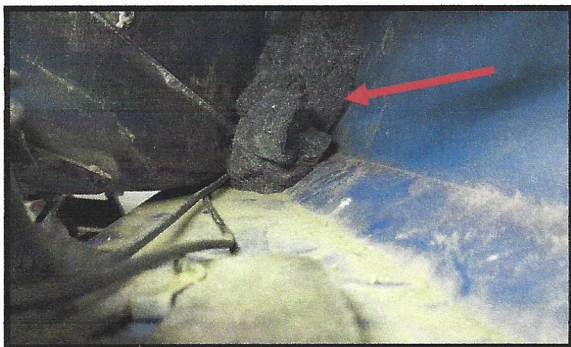
Cut the very top off the packet, as you pull the sponge out, squeeze the fluid back into the packet. Fold the top over to keep the fluid from drying out. Apply only a thin coat of promotor to the immediate area where the strips are mounted. Re dip the sponge until its dry. 2 packets should be enough if used properly.



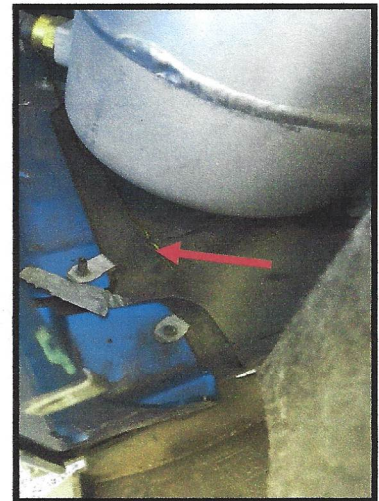
Raise the vehicle and remove the right rear wheel. Remove the 3 #15 torx screws. There is 1 x 7mm screw underneath to remove also. Remove the front wheel splash shield and #15 torx screws if you haven't already.



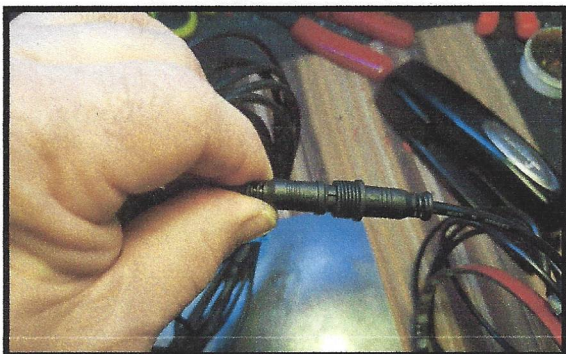
The inner fender panel is very flexible so you can untuck it from behind the fender then lift the bottom up and out to gain access to the rocker panel area to fish the extension cable from front to rear.



Looking toward the front of the car in the dark recess you just uncovered there are 2 wads of stuffing that need to be removed. They are stuffed into the rocker panel area to block debris so you may have to reach way in to grab them.



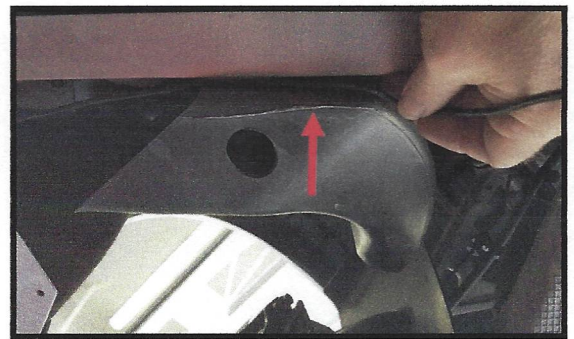
Using a long stiff wire (straightened coat hangars taped together works), feed the wire all the way from the back to the front cove area. Wire will come out at the bottom of the inner front fender. Tape the end of the extension cable with the nut on it to the fishing wire and pull it through to the back



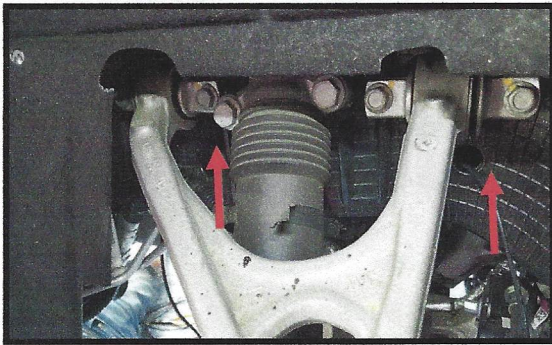
Line up arrows on the connector and plug it in to the extra lead by the front cove led strip. Tighten the nut.



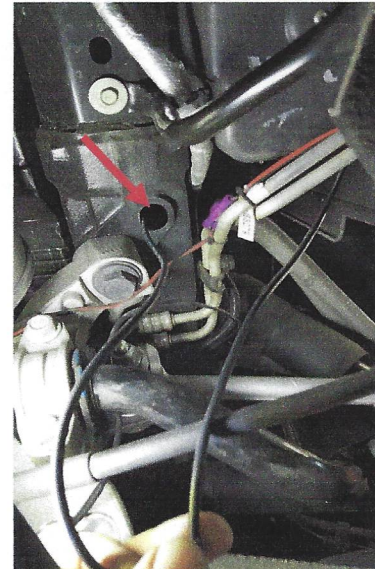
Route the cable at the back through the hole in bottom of the fender panel.



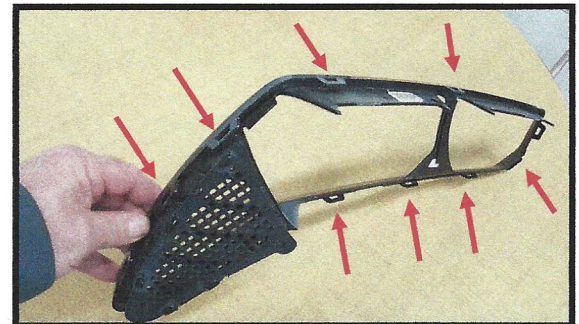
Route the wire behind the brake scoop up towards the frame.



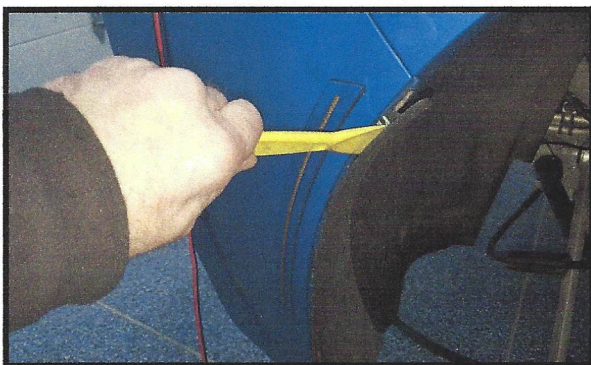
There are 2 holes in the frame you can use to isolate the wire from the wheel area. You can use a coat hanger to tape the wire to and fish from one hole to the next. You could also wire tie the cable to the wiring below the holes but it won't be as protected. You can also fish it to the hole in the next picture which is on the bottom of the frame further back.



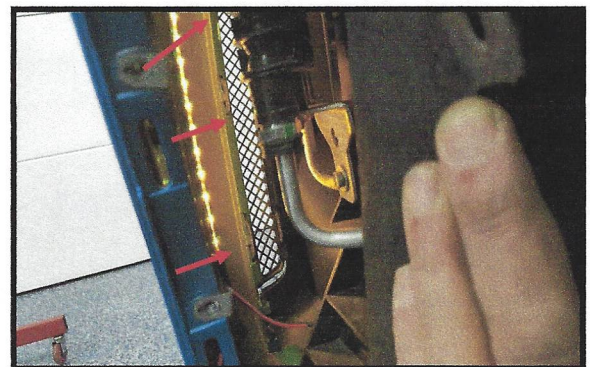
Insert a plastic removal tool between the taillight bezel and the rear fascia. The next picture shows the tabs you are releasing. Pull out on the bezel as you work your way around. Remove both.



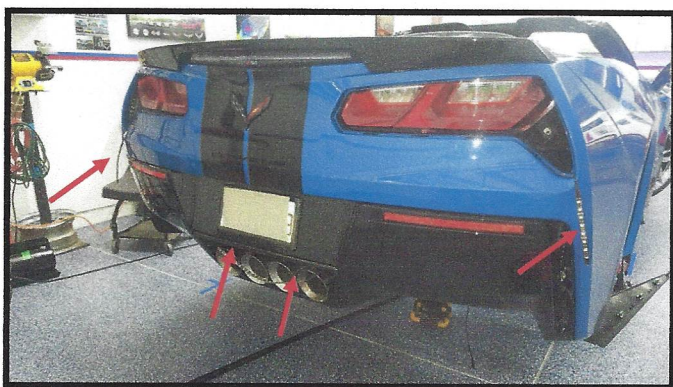
There are 3 on the top and bottom, 3 on the wide side and 2 on the narrow end. Pull out as you release the tabs.



Pry both rear splash guards out. Remove the 2 x #15 torx screws. Pull the fender shield back and bungee cord back so you can see inside the quarter panel.



Looking through the quarter panel you can see the lower rear grills. There are 3 tabs on each side you need to release to remove it. Release the bottom ones then pull out while you release the rest of them. Get the top 2 through the taillight opening



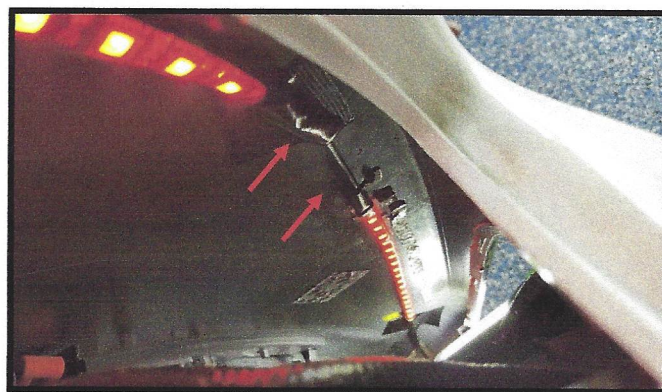
Lay out the rear kit with the connection lead on the passenger side. Lay the center exhaust section on top of the tailpipes and route the side led strips behind the fascia and out towards the taillight openings hanging the short led strip out of the taillight opening. Place a light behind the lower rear vent so you can see where to route the leds. Line up the arrows on the connector and test before mounting leds.



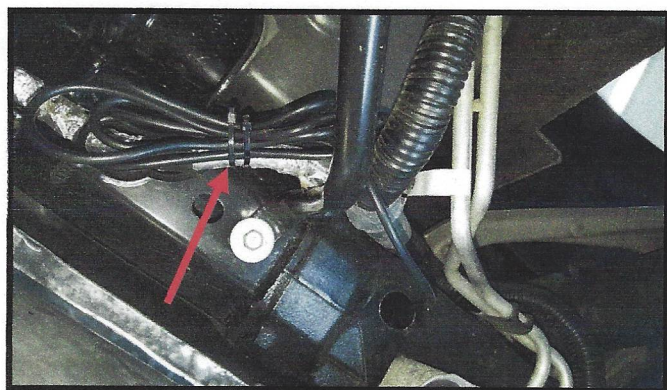
Remove the backing from the cable clips before you stick the ends of the led strips. Be sure to prep this area with adhesion promotor. Come back and press the clips in place after a few minutes.



Wipe the front most edge of the area over the tailpipes with alcohol pads then apply a thin coat of adhesion promotor. Reseal packet so it doesn't dry out. Center the exhaust strip and attach it along the front most edge as shown. Always route cables away from the exhaust.



This is looking down through the taillight opening to show where to mount the side led strips. Mount them a couple inches forward of the vents. Wipe with alcohol then apply adhesion promotor sparingly. Center the strips in the openings and peel the backing off to apply. Always tape the cables to the panel to prevent the strips from pulling off. (red arrows). Repeat on both sides.



Now go back and tape down the cables wherever you can. We tape them to the bottom of the rear fascia where the cables go out to the side vents. Wipe the panels first as they will be dirty. Finally bundle the extra cable and tie it up away from the exhaust system.

Once finished check all the cables and tape down where necessary. The rear vents and taillight bezels snap back into place. Put the stuffing back into the bottom of the rocker area. Secure all the panels you removed. Make sure you don't have any extra screws!

Don't forget to torque any wheels you removed to 100 ft lbs.

100 ft lbs.

